

木津川市コミュニティバス利用者数の推移

平成26年11月末現在

	H21		H22		H23		H24		H25		H26(4-11)	
	増減数	増減率	増減数	増減率	増減数	増減率	増減数	増減率	増減数	増減率	増減数	増減率
きのつ 合計 ^{※1}	349,480		272,845		245,857		243,681		236,620		153,271	
			-76,635	78.07%	-26,988	90.11%	-2,176	99.11%	-7,061	97.10%	-6,488	95.94%
きのつ 木-1 (梅谷高の原線)	137,108	料 金 改 定	104,201		96,151		98,010		92,382		60,315	
			-32,907	76.00%	-8,050	92.27%	1,859	101.93%	-5,628	94.26%	-2,856	95.48%
きのつ 木-2 (鹿背山高の原線)	82,236		63,950		54,115		52,909		50,618		31,881	
			-18,286	77.76%	-9,835	84.62%	-1,206	97.77%	-2,291	95.67%	-1,284	96.13%
きのつ 木-3 (木津川台高の原線)	130,136		104,694		95,591		92,762		93,620		61,075	
			-25,442	80.45%	-9,103	91.31%	-2,829	97.04%	858	100.92%	-2,348	96.30%
当尾線 ^{※2}	21,840		17,917		16,789		18,688		18,072		14,340	
			-3,923	82.04%	-1,128	93.70%	1,899	111.31%	-616	96.70%	395	102.84%
加茂線 合計 ^{※2}	11,086		11,586		10,847		10,907		8,267		4,439	
			500	104.51%	-739	93.62%	60	100.55%	-2,640	75.80%	-1,711	72.18%
山田線 ^{※3}	1,890		1,768		1,424		945		379		91	
			-122	93.54%	-344	80.54%	-479	66.36%	-566	40.11%	-240	27.49%
大畑線 ^{※3}	938		1,099		931		945		477		209	
			161	117.16%	-168	84.71%	14	101.50%	-468	50.48%	-171	55.00%
観音寺線 ^{※3}	125		202		262		431		195		29	
			77	161.60%	60	129.70%	169	164.50%	-236	45.24%	-152	16.02%
南加茂台線 ^{※3}	710		479		805		763		479		142	
			-231	67.46%	326	168.06%	-42	94.78%	-284	62.78%	-280	33.65%
奥畑線	2,232		2,626		2,469		2,732		2,579		1,913	
			394	117.65%	-157	94.02%	263	110.65%	-153	94.40%	154	108.75%
銭司線 ^{※3}	1,845		1,933		1,786		1,855		1,128		400	
			88	104.77%	-147	92.40%	69	103.86%	-727	60.81%	-506	44.15%
西線 ^{※3}	1,703		1,725		1,680		1,679		906		250	
			22	101.29%	-45	97.39%	-1	99.94%	-773	53.96%	-527	32.18%
通学線	1,643		1,754		1,490		1,557		2,124		1,405	
			111	106.76%	-264	84.95%	67	104.50%	567	136.42%	11	100.79%
山城線 ^{※2}	7,912		8,652		9,730		9,645		11,012		8,059	
			740	109.35%	1,078	112.46%	-85	99.13%	1,367	114.17%	886	112.35%
神童子線 ^{※2}	156		114		110		108		46		20	
			-42	73.08%	-4	96.49%	-2	98.18%	-62	42.59%	-11	64.52%
合計	390,474		311,114		283,333		283,029		274,017		180,129	
			-79,360	79.68%	-27,781	91.07%	-304	99.89%	-9,012	96.82%	-6,929	96.30%

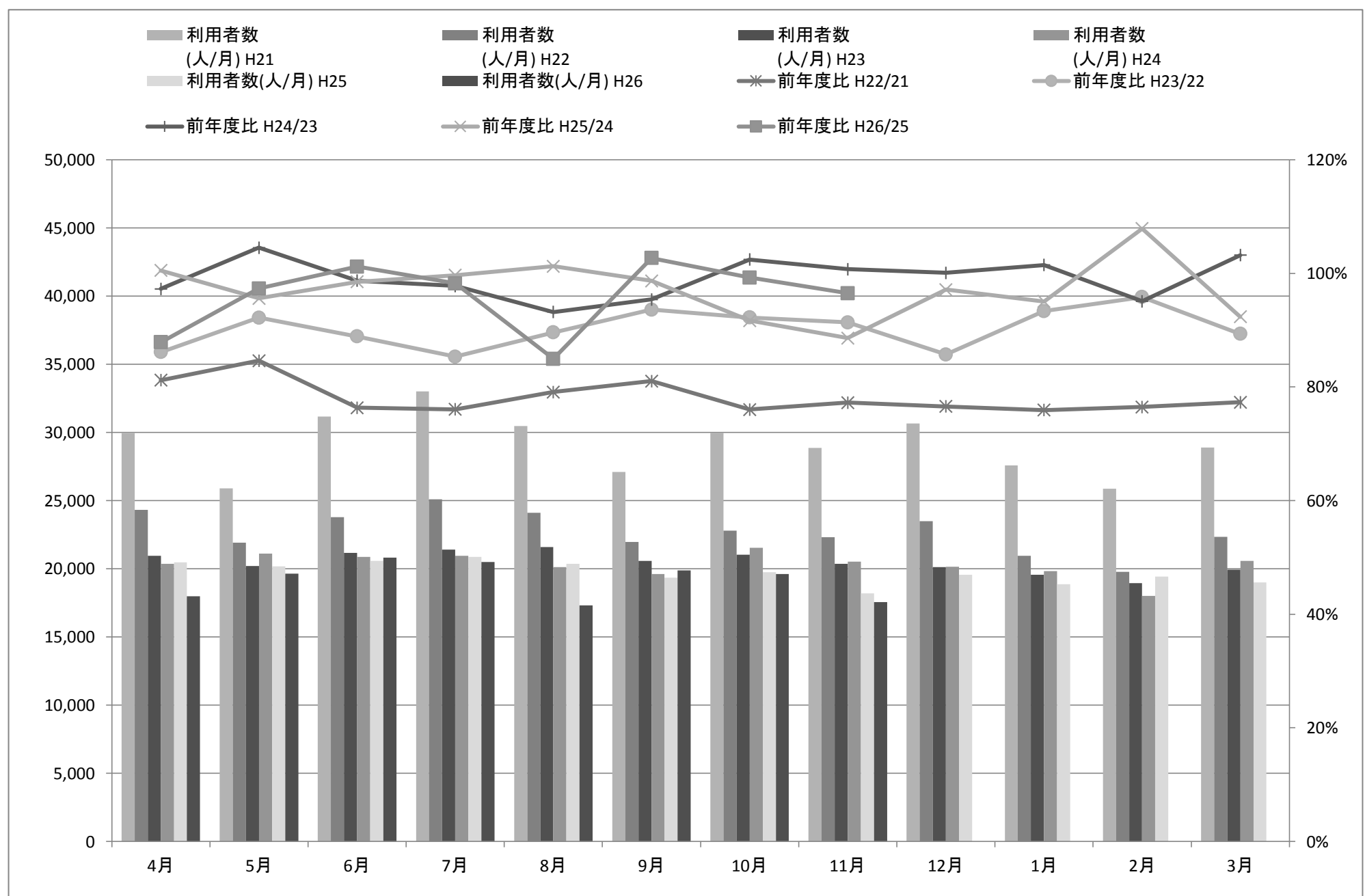
※1 平成22年 3月 運賃改定

※2 平成20年11月 路線再編

※3 平成25年10月 定時路線から予約型乗合タクシーへ変更

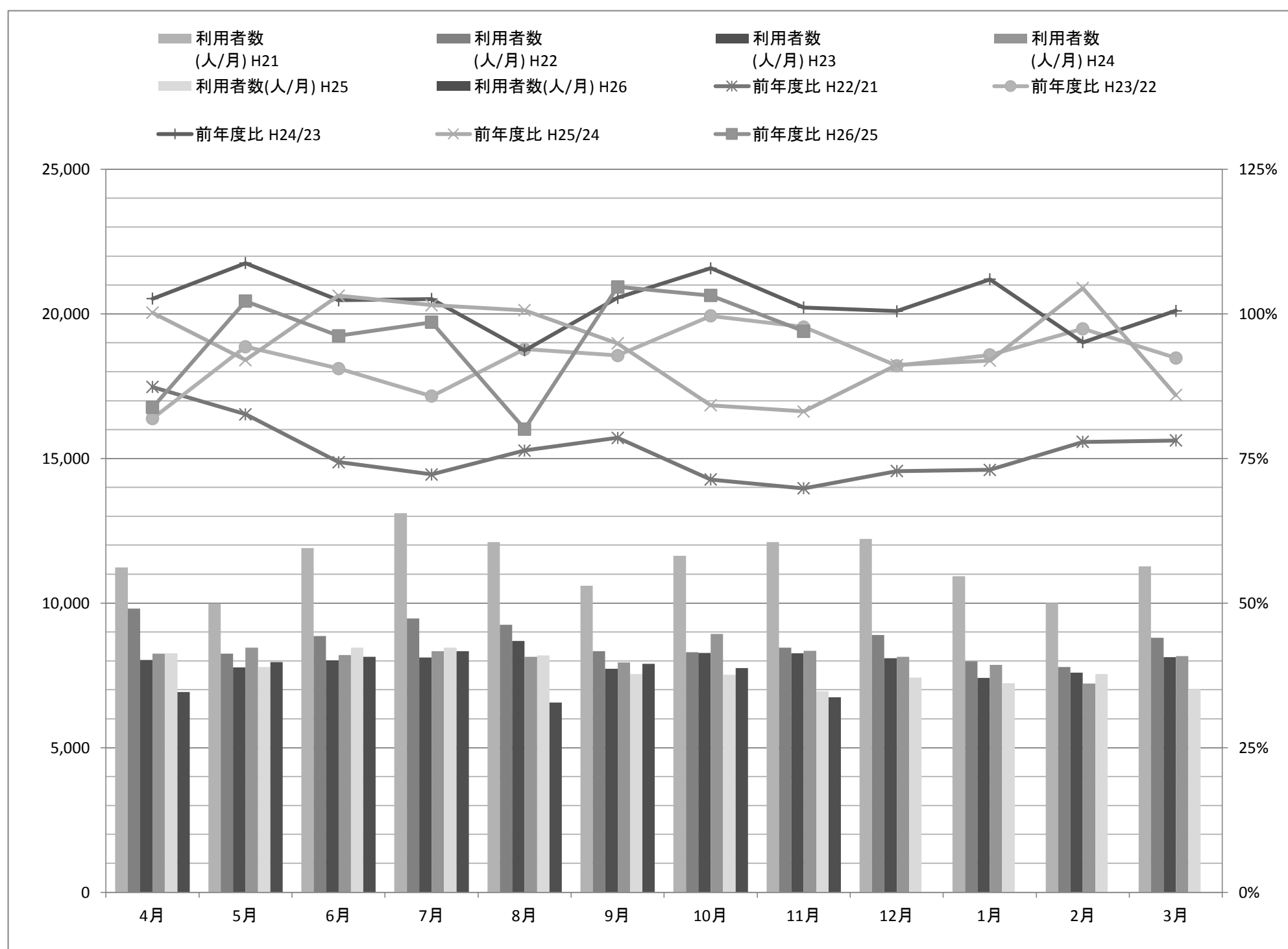
きのつバス合計

きのつバス合計		4月	5月	6月	7月	8月	9月	10月	11月	12月	1月	2月	3月	平均	合計	4-11月比
利用者数 (人/月)	H21	29,955	25,903	31,174	33,003	30,474	27,105	29,999	28,870	30,665	27,587	25,863	28,882	29,123	349,480	236,483
	H22	24,320	21,922	23,795	25,099	24,110	21,965	22,807	22,301	23,477	20,943	19,778	22,328	22,737	272,845	186,319
	H23	20,944	20,207	21,153	21,415	21,598	20,563	21,034	20,374	20,126	19,550	18,949	19,944	20,488	245,857	167,288
	H24	20,368	21,117	20,878	20,938	20,126	19,617	21,545	20,521	20,141	19,833	18,014	20,583	20,307	243,681	165,110
	H25	20,468	20,187	20,570	20,870	20,373	19,356	19,751	18,184	19,561	18,853	19,436	19,011	19,718	236,620	159,759
	H26	17,982	19,650	20,809	20,498	17,306	19,876	19,603	17,547					19,159	153,271	153,271
前年度比	H22/21	81.19%	84.63%	76.33%	76.05%	79.12%	81.04%	76.03%	77.25%	76.56%	75.92%	76.47%	77.31%	78.07%	78.07%	78.95%
	H23/22	86.12%	92.18%	88.90%	85.32%	89.58%	93.62%	92.23%	91.36%	85.73%	93.35%	95.81%	89.32%	90.11%	90.11%	89.91%
	H24/23	97.25%	104.50%	98.70%	97.77%	93.18%	95.40%	102.43%	100.72%	100.07%	101.45%	95.07%	103.20%	99.11%	99.11%	98.75%
	H25/24	100.49%	95.60%	98.52%	99.68%	101.23%	98.67%	91.67%	88.61%	97.12%	95.06%	107.89%	92.36%	97.10%	97.10%	96.81%
	H26/25	87.85%	97.34%	101.16%	98.22%	84.95%	102.69%	99.25%	96.50%					97.16%	64.78%	95.99%
利用者数 (人/日)	H21	998.50	835.58	1039.13	1064.61	983.03	903.50	967.71	962.33	989.19	889.90	923.68	931.68	957.40	-	969.30
	H22	810.67	707.16	793.17	809.65	777.74	732.17	735.71	743.37	757.32	675.58	706.36	720.26	747.43	-	763.70
	H23	698.13	651.84	705.10	690.81	696.71	685.43	678.52	679.13	649.23	630.65	653.41	643.35	671.86	-	685.71
	H24	678.93	681.19	695.93	675.42	649.23	653.90	695.00	684.03	649.71	639.77	643.36	663.97	667.54	-	676.70
	H25	682.27	651.19	685.67	673.23	657.19	645.20	637.13	606.13	631.00	608.16	694.14	613.26	648.71	-	654.75
	H26	599.40	633.87	693.63	661.23	558.26	662.53	632.35	584.90					628.27	-	628.27



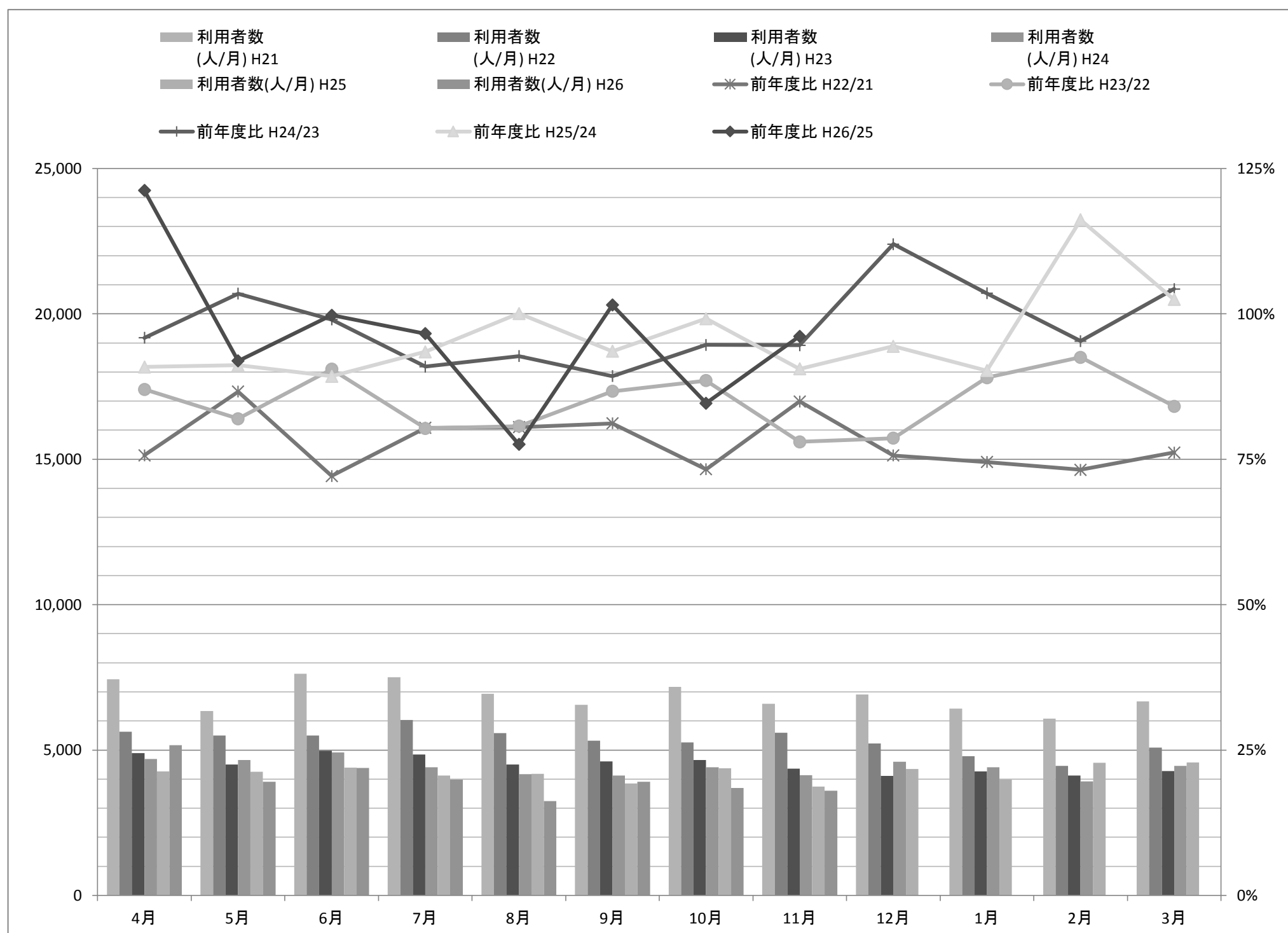
きのつバス木-1

木-1 梅谷高の原線		4月	5月	6月	7月	8月	9月	10月	11月	12月	1月	2月	3月	平均	合計	4-11月比
利用者数 (人/月)	H21	11,231	9,982	11,907	13,106	12,114	10,605	11,637	12,104	12,217	10,932	10,007	11,266	11,426	137,108	92,686
	H22	9,811	8,250	8,854	9,468	9,253	8,333	8,305	8,455	8,897	7,983	7,792	8,800	8,683	104,201	70,729
	H23	8,036	7,781	8,017	8,121	8,688	7,734	8,275	8,263	8,099	7,417	7,591	8,129	8,013	96,151	64,915
	H24	8,248	8,464	8,206	8,331	8,141	7,949	8,928	8,354	8,138	7,860	7,219	8,172	8,168	98,010	66,621
	H25	8,264	7,788	8,464	8,457	8,192	7,544	7,516	6,946	7,419	7,225	7,541	7,026	7,699	92,382	63,171
	H26	6,927	7,961	8,144	8,334	6,560	7,896	7,756	6,737					7,539	60,315	60,315
前年度比	H22/21	87.36%	82.65%	74.36%	72.24%	76.38%	78.58%	71.37%	69.85%	72.82%	73.02%	77.87%	78.11%	76.00%	76.00%	76.60%
	H23/22	81.91%	94.32%	90.55%	85.77%	93.89%	92.81%	99.64%	97.73%	91.03%	92.91%	97.42%	92.38%	92.27%	92.27%	92.08%
	H24/23	102.64%	108.78%	102.36%	102.59%	93.70%	102.78%	107.89%	101.10%	100.48%	105.97%	95.10%	100.53%	101.93%	101.93%	102.73%
	H25/24	100.19%	92.01%	103.14%	101.51%	100.63%	94.91%	84.18%	83.15%	91.16%	91.92%	104.46%	85.98%	94.26%	94.26%	94.97%
	H26/25	83.82%	102.22%	96.22%	98.55%	80.08%	104.67%	103.19%	96.99%					95.72%	65.29%	95.72%
利用者数 (人/日)	H21	374.37	322.00	396.90	422.77	390.77	353.50	375.39	403.47	394.10	352.65	357.39	363.42	375.56	-	379.90
	H22	327.03	266.13	295.13	305.42	298.48	277.77	267.90	281.83	287.00	257.52	278.29	283.87	285.53	-	289.96
	H23	267.87	251.00	267.23	261.97	280.26	257.80	266.94	275.43	261.26	239.26	261.76	262.23	262.75	-	266.06
	H24	274.93	273.03	273.53	268.74	262.61	264.97	288.00	278.47	262.52	253.55	257.82	263.61	268.48	-	273.04
	H25	275.47	251.23	282.13	272.81	264.26	251.47	242.45	231.53	239.32	233.06	269.32	226.65	253.31	-	258.92
	H26	230.90	256.81	271.47	268.84	211.61	263.20	250.19	224.57					247.20	-	247.20



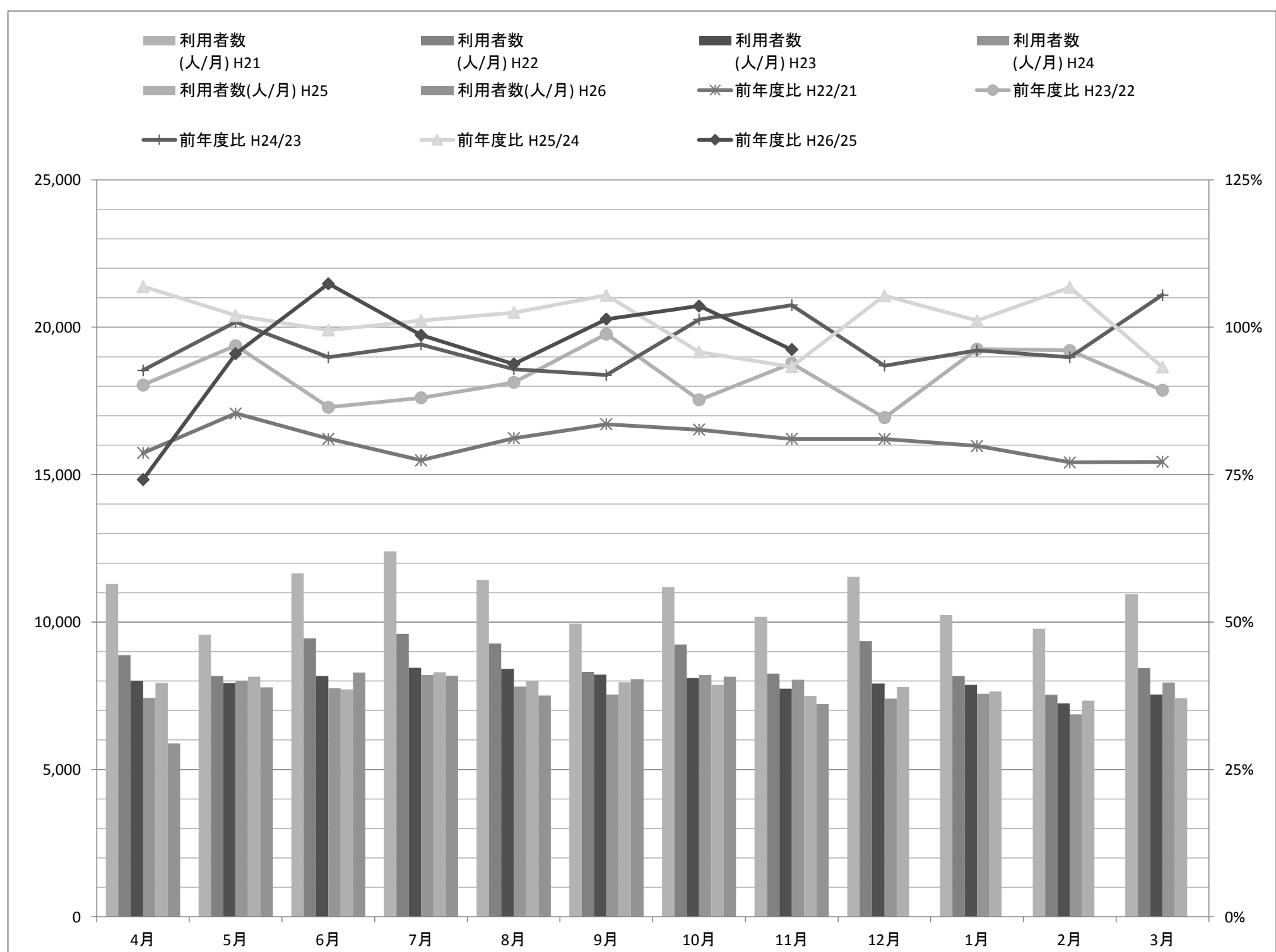
きのつバス木-2

木-2 鹿背山高の原線		4月	5月	6月	7月	8月	9月	10月	11月	12月	1月	2月	3月	平均	合計	4-11月比
利用者数 (人/月)	H21	7,433	6,345	7,617	7,501	6,929	6,556	7,177	6,589	6,912	6,421	6,080	6,676	6,853	82,236	56,147
	H22	5,626	5,496	5,494	6,031	5,578	5,322	5,259	5,596	5,228	4,785	4,450	5,085	5,329	63,950	44,402
	H23	4,896	4,505	4,971	4,843	4,501	4,614	4,656	4,365	4,110	4,260	4,118	4,276	4,510	54,115	37,351
	H24	4,694	4,661	4,923	4,404	4,174	4,120	4,407	4,130	4,602	4,410	3,925	4,459	4,409	52,909	35,513
	H25	4,265	4,249	4,394	4,117	4,176	3,855	4,370	3,739	4,345	3,980	4,559	4,569	4,218	50,618	33,165
	H26	5,169	3,905	4,384	3,977	3,239	3,913	3,699	3,595					3,985	31,881	31,881
前年度比	H22/21	75.69%	86.62%	72.13%	80.40%	80.50%	81.18%	73.28%	84.93%	75.64%	74.52%	73.19%	76.17%	77.76%	77.76%	79.34%
	H23/22	87.02%	81.97%	90.48%	80.30%	80.69%	86.70%	88.53%	78.00%	78.62%	89.03%	92.54%	84.09%	84.62%	84.62%	84.21%
	H24/23	95.87%	103.46%	99.03%	90.94%	92.73%	89.29%	94.65%	94.62%	111.97%	103.52%	95.31%	104.28%	97.77%	97.77%	95.08%
	H25/24	90.86%	91.16%	89.25%	93.48%	100.05%	93.57%	99.16%	90.53%	94.42%	90.25%	116.15%	102.47%	95.67%	95.67%	93.51%
	H26/25	121.20%	91.90%	99.77%	96.60%	77.56%	101.50%	84.65%	96.15%					94.48%	62.98%	96.17%
利用者数 (人/日)	H21	247.77	204.68	253.90	241.97	223.52	218.53	231.52	219.63	222.97	207.13	217.14	215.35	225.34	-	230.19
	H22	187.53	177.29	183.13	194.55	179.94	177.40	169.65	186.53	168.65	154.35	158.93	164.03	175.17	-	182.00
	H23	163.20	145.32	165.70	156.23	145.19	153.80	150.19	145.50	132.58	137.42	142.00	137.94	147.92	-	153.14
	H24	156.47	150.35	164.10	142.06	134.65	137.33	142.16	137.67	148.45	142.26	140.18	143.84	144.96	-	145.60
	H25	142.17	137.06	146.47	132.81	134.71	128.50	140.97	124.63	140.16	128.39	162.82	147.39	138.84	-	135.91
	H26	172.30	125.97	146.13	128.29	104.48	130.43	119.32	119.83					130.85	-	130.85



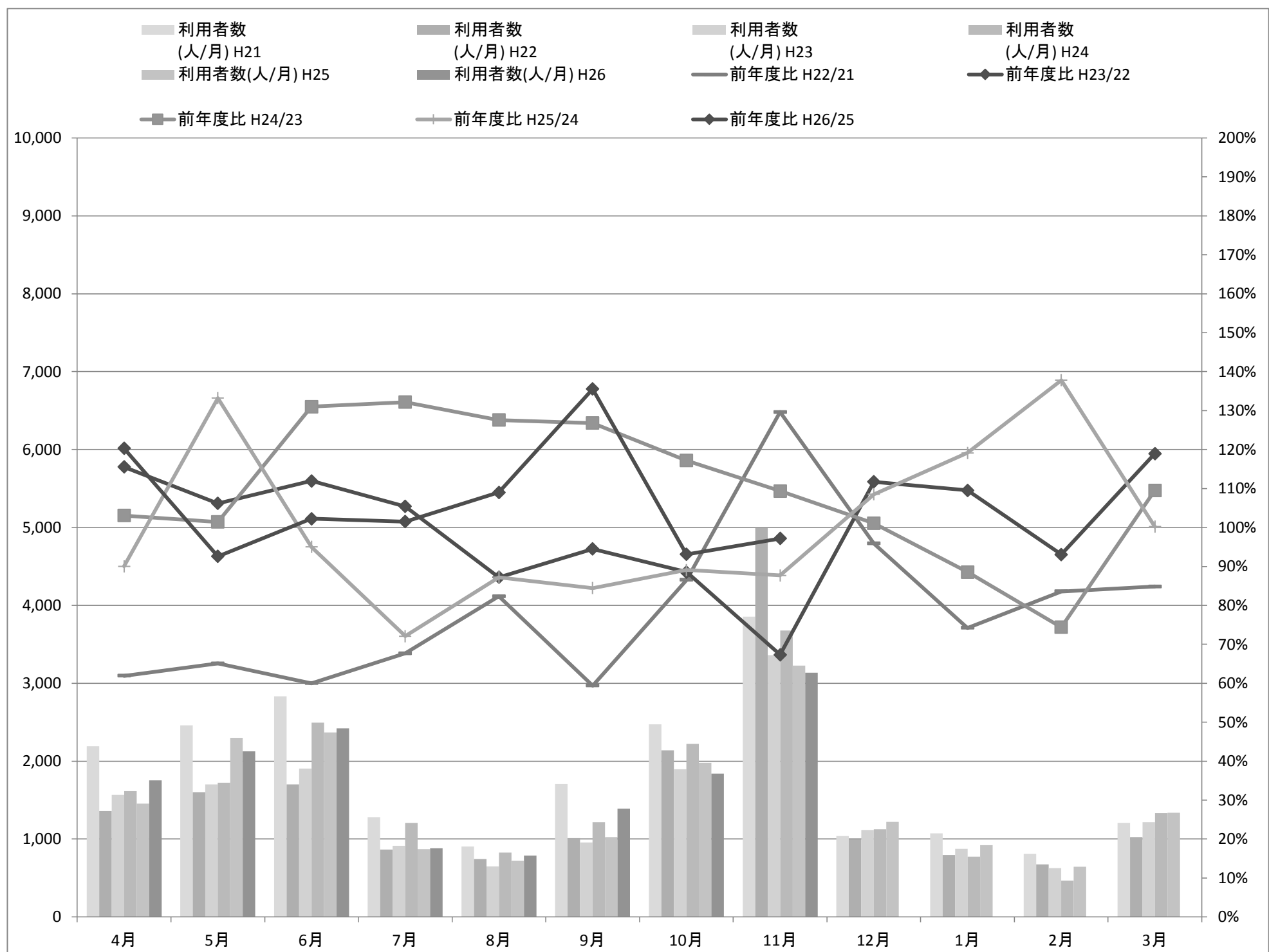
きのつバス木-3

木-3 木津川台高の原線		4月	5月	6月	7月	8月	9月	10月	11月	12月	1月	2月	3月	平均	合計	4-11月比
利用者数 (人/月)	H21	11,291	9,576	11,650	12,396	11,431	9,944	11,185	10,177	11,536	10,234	9,776	10,940	10,845	130,136	87,650
	H22	8,883	8,176	9,447	9,600	9,279	8,310	9,243	8,250	9,352	8,175	7,536	8,443	8,725	104,694	71,188
	H23	8,012	7,921	8,165	8,451	8,409	8,215	8,103	7,746	7,917	7,873	7,240	7,539	7,966	95,591	65,022
	H24	7,426	7,992	7,749	8,203	7,811	7,548	8,210	8,037	7,401	7,563	6,870	7,952	7,730	92,762	62,976
	H25	7,939	8,150	7,712	8,296	8,005	7,957	7,865	7,499	7,797	7,648	7,336	7,416	7,802	93,620	63,423
	H26	5,886	7,784	8,281	8,187	7,507	8,067	8,148	7,215					7,634	61,075	61,075
前年度比	H22/21	78.67%	85.38%	81.09%	77.44%	81.17%	83.57%	82.64%	81.07%	81.07%	79.88%	77.09%	77.18%	80.45%	80.45%	81.38%
	H23/22	90.19%	96.88%	86.43%	88.03%	90.62%	98.86%	87.67%	93.89%	84.66%	96.31%	96.07%	89.29%	91.31%	91.31%	91.57%
	H24/23	92.69%	100.90%	94.91%	97.07%	92.89%	91.88%	101.32%	103.76%	93.48%	96.06%	94.89%	105.48%	97.04%	97.04%	96.92%
	H25/24	106.91%	101.98%	99.52%	101.13%	102.48%	105.42%	95.80%	93.31%	105.35%	101.12%	106.78%	93.26%	100.92%	100.92%	100.82%
	H26/25	74.14%	95.51%	107.38%	98.69%	93.78%	101.38%	103.60%	96.21%					97.86%	65.24%	96.34%
利用者数 (人/日)	H21	376.37	308.90	388.33	399.87	368.74	331.47	360.81	339.23	372.13	330.13	349.14	352.90	356.50	-	359.22
	H22	296.10	263.74	314.90	309.68	299.32	277.00	298.16	275.00	301.68	263.71	269.14	272.35	286.73	-	291.74
	H23	267.07	255.52	272.17	272.61	271.26	273.83	261.39	258.20	255.39	253.97	249.66	243.19	261.19	-	266.51
	H24	247.53	257.81	258.30	264.61	251.97	251.60	264.84	267.90	238.74	243.97	245.36	256.52	254.10	-	258.07
	H25	264.63	262.90	257.07	267.61	258.23	265.23	253.71	249.97	251.52	246.71	262.00	239.23	256.57	-	259.92
	H26	196.20	251.10	276.03	264.10	242.16	268.90	262.84	240.50					250.23	-	250.23



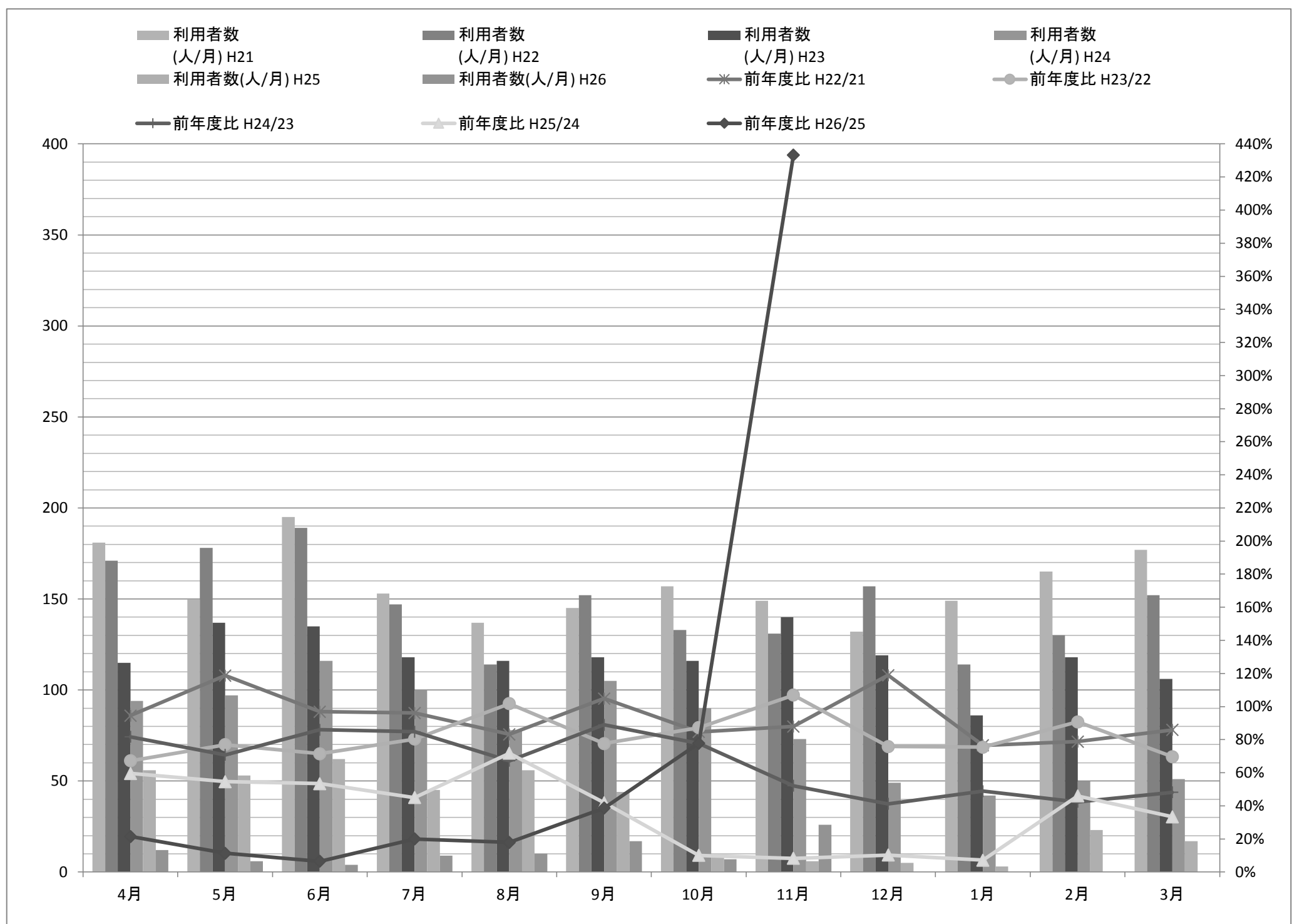
当尾線

当尾線		4月	5月	6月	7月	8月	9月	10月	11月	12月	1月	2月	3月	平均	合計	4-11月比
利用者数 (人/月)	H21	2,193	2,462	2,834	1,281	904	1,707	2,473	3,854	1,041	1,075	809	1,207	1,820.0	21,840	17,708
	H22	1,358	1,602	1,701	867	744	1,014	2,140	4,995	998	798	676	1,024	1,493.1	17,917	14,421
	H23	1,569	1,701	1,904	914	649	958	1,895	3,363	1,115	874	629	1,218	1,399.1	16,789	12,953
	H24	1,617	1,725	2,494	1,208	828	1,215	2,221	3,677	1,127	774	468	1,334	1,557.3	18,688	14,985
	H25	1,456	2,298	2,369	871	722	1,026	1,978	3,225	1,223	922	645	1,337	1,506.0	18,072	13,945
	H26	1,752	2,128	2,422	884	787	1,391	1,842	3,134					1,792.5	14,340	14,340
前年度比	H22/21	61.92%	65.07%	60.02%	67.68%	82.30%	59.40%	86.53%	129.61%	95.87%	74.23%	83.56%	84.84%	82.04%	82.04%	76.57%
	H23/22	115.54%	106.18%	111.93%	105.42%	87.23%	94.48%	88.55%	67.33%	111.72%	109.52%	93.05%	118.95%	93.70%	93.70%	97.08%
	H24/23	103.06%	101.41%	130.99%	132.17%	127.58%	126.83%	117.20%	109.34%	101.08%	88.56%	74.40%	109.52%	111.31%	111.31%	118.57%
	H25/24	90.04%	133.22%	94.99%	72.10%	87.20%	84.44%	89.06%	87.70%	108.52%	119.12%	137.82%	100.22%	96.70%	96.70%	92.34%
	H26/25	120.33%	92.60%	102.24%	101.49%	109.00%	135.58%	93.12%	97.19%					119.03%	79.35%	106.44%
利用者数 (人/日)	H21	73.10	79.42	94.47	41.32	29.16	56.90	79.77	128.47	33.58	34.68	28.89	38.94	59.89	-	72.83
	H22	45.27	51.68	56.70	27.97	24.00	33.80	69.03	166.50	32.19	25.74	24.14	33.03	49.17	-	59.37
	H23	52.30	54.87	63.47	29.48	20.94	31.93	61.13	112.10	35.97	28.19	21.69	39.29	45.95	-	53.28
	H24	53.90	55.65	83.13	38.97	26.71	40.50	71.65	122.57	36.35	24.97	16.71	43.03	51.18	-	61.63
	H25	48.53	74.13	78.97	28.10	23.29	34.20	63.81	107.49	39.45	29.74	23.04	2.54	46.11	-	57.31
	H26	3.44	4.04	4.75	1.68	1.49	2.73	3.50	6.15					3.47	-	3.47



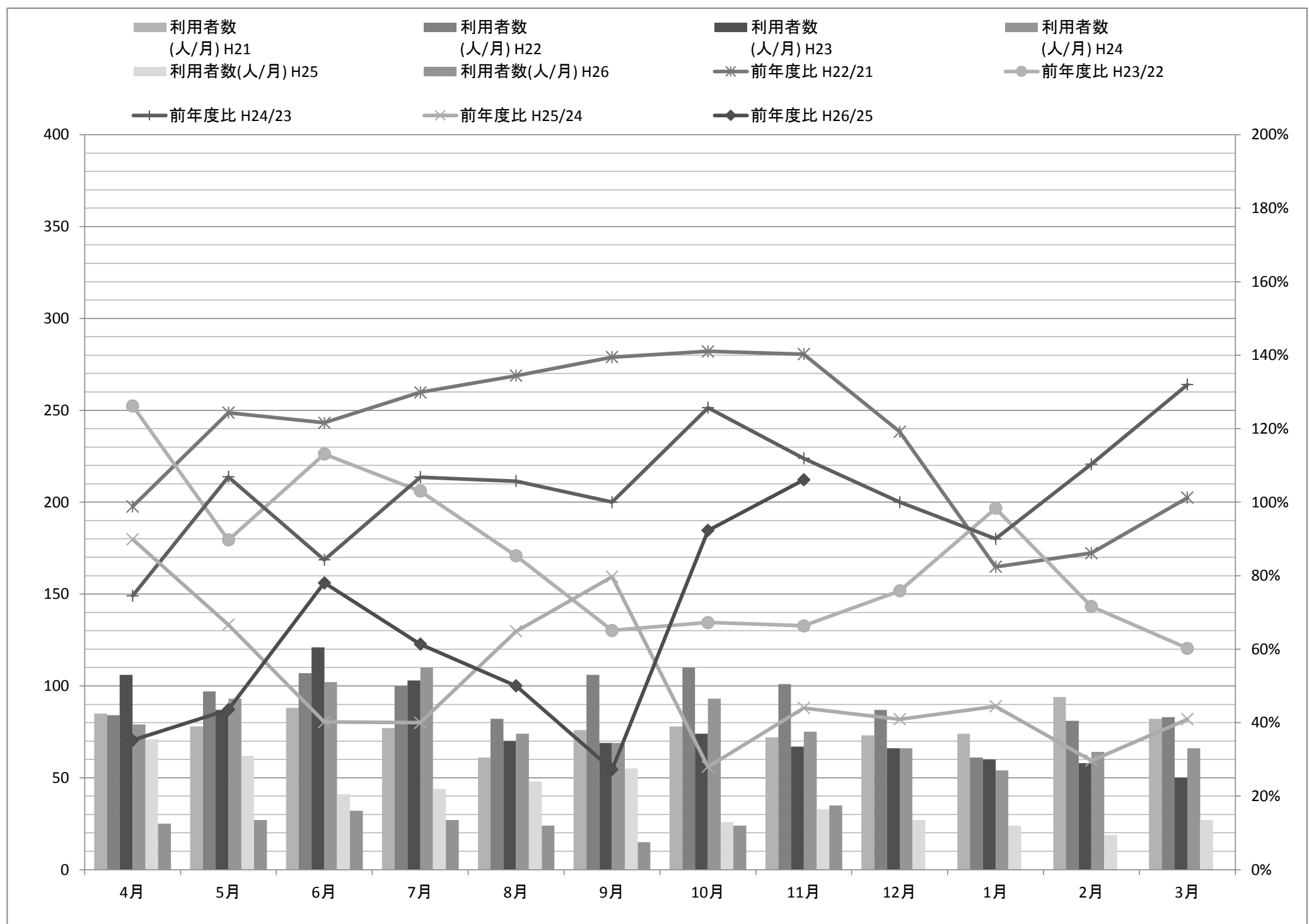
山田線

山田線		4月	5月	6月	7月	8月	9月	10月	11月	12月	1月	2月	3月	平均	合計	4-11月比
利用者数 (人/月)	H21	181	150	195	153	137	145	157	149	132	149	165	177	157.50	1,890	1,267
	H22	171	178	189	147	114	152	133	131	157	114	130	152	147.33	1,768	1,215
	H23	115	137	135	118	116	118	116	140	119	86	118	106	118.67	1,424	995
	H24	94	97	116	100	78	105	90	73	49	42	50	51	78.75	945	753
	H25	56	53	62	45	56	44	9	6	5	3	23	17	31.58	379	331
	H26	12	6	4	9	10	17	7	26					11.38	91	91
前年度比	H22/21	94.48%	118.67%	96.92%	96.08%	83.21%	104.83%	84.71%	87.92%	118.94%	76.51%	78.79%	85.88%	93.54%	93.54%	95.85%
	H23/22	67.25%	76.97%	71.43%	80.27%	101.75%	77.63%	87.22%	106.87%	75.80%	75.44%	90.77%	69.74%	80.54%	80.54%	83.67%
	H24/23	81.74%	70.80%	85.93%	84.75%	67.24%	88.98%	77.59%	52.14%	41.18%	48.84%	42.37%	48.11%	66.36%	66.36%	76.15%
	H25/24	59.57%	54.64%	53.45%	45.00%	71.79%	41.90%	10.00%	8.22%	10.20%	7.14%	46.00%	33.33%	40.11%	40.11%	43.07%
	H26/25	21.43%	11.32%	6.45%	20.00%	17.86%	38.64%	77.78%	433.33%					36.02%	24.01%	78.35%
利用者数 (人/日)	H21	8.62	8.33	8.86	6.95	6.52	7.63	7.48	7.84	6.95	7.84	8.68	8.05	7.81	-	7.78
	H22	8.14	9.89	8.59	7.00	5.18	7.60	6.65	6.55	8.26	6.00	6.84	6.91	7.30	-	7.45
	H23	5.75	7.21	6.14	5.90	5.04	5.90	5.80	7.00	6.26	4.53	5.62	5.05	5.85	-	6.09
	H24	4.70	4.62	5.52	4.76	3.39	5.53	4.09	3.48	2.58	2.21	2.63	2.55	3.84	-	4.51
	H25	2.67	2.52	3.10	2.05	2.55	2.32	0.41	0.30	0.26	0.16	1.21	0.85	1.53	-	1.99
	H26	0.57	0.30	0.19	0.41	0.48	0.85	0.32	1.44					0.57	-	0.57



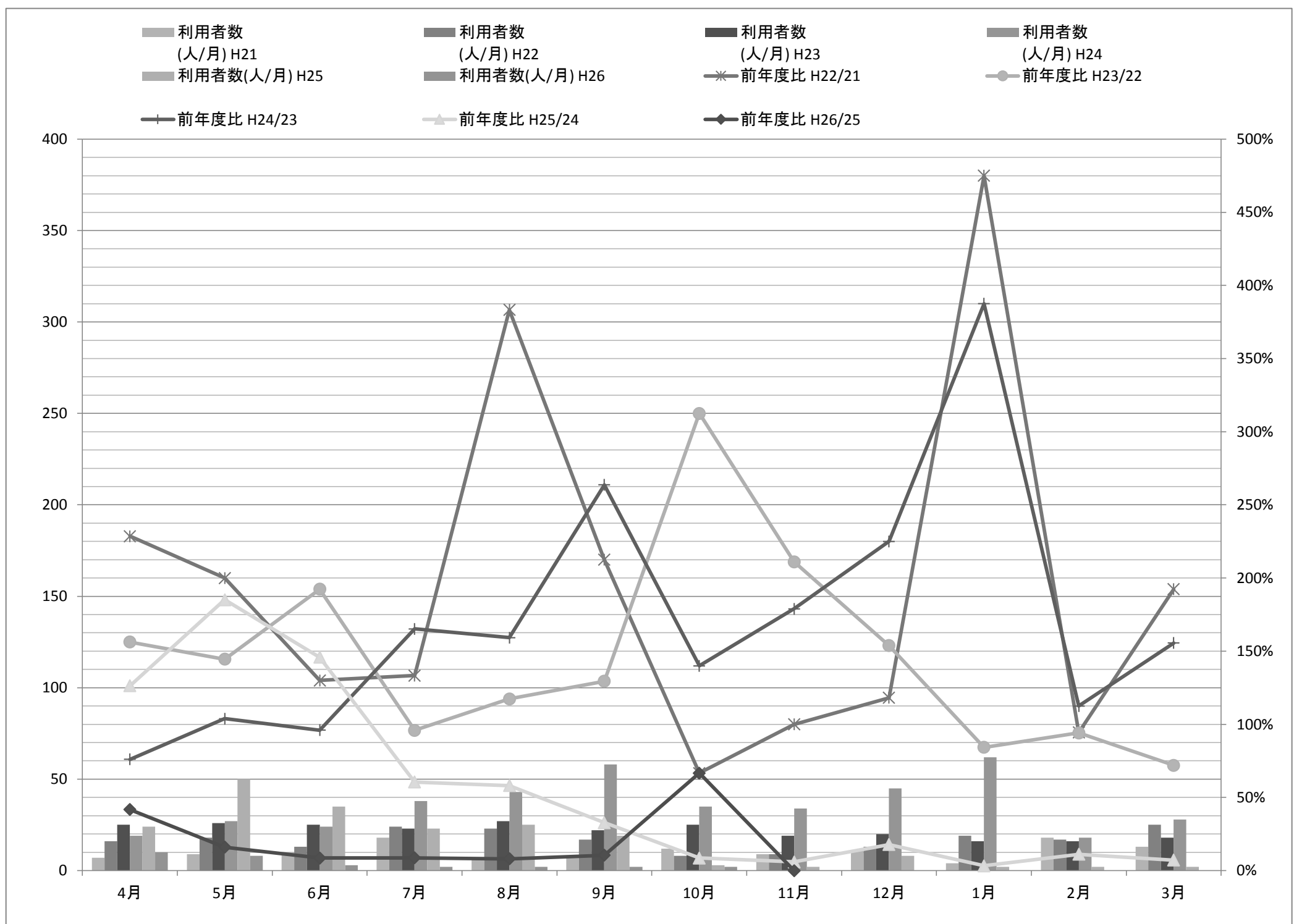
大畑線

大畑線		4月	5月	6月	7月	8月	9月	10月	11月	12月	1月	2月	3月	平均	合計	4-11月比
利用者数 (人/月)	H21	85	78	88	77	61	76	78	72	73	74	94	82	78.17	938	615
	H22	84	97	107	100	82	106	110	101	87	61	81	83	91.58	1,099	787
	H23	106	87	121	103	70	69	74	67	66	60	58	50	77.58	931	697
	H24	79	93	102	110	74	69	93	75	66	54	64	66	78.75	945	695
	H25	71	62	41	44	48	55	26	33	27	24	19	27	39.75	477	380
	H26	25	27	32	27	24	15	24	35					26.13	209	209
前年度比	H22/21	98.82%	124.36%	121.59%	129.87%	134.43%	139.47%	141.03%	140.28%	119.18%	82.43%	86.17%	101.22%	117.16%	117.16%	128.73%
	H23/22	126.19%	89.69%	113.08%	103.00%	85.37%	65.09%	67.27%	66.34%	75.86%	98.36%	71.60%	60.24%	84.71%	84.71%	89.50%
	H24/23	74.53%	106.90%	84.30%	106.80%	105.71%	100.00%	125.68%	111.94%	100.00%	90.00%	110.34%	132.00%	101.50%	101.50%	101.98%
	H25/24	89.87%	66.67%	40.20%	40.00%	64.86%	79.71%	27.96%	44.00%	40.91%	44.44%	29.69%	40.91%	50.48%	50.48%	56.66%
	H26/25	35.21%	43.55%	78.05%	61.36%	50.00%	27.27%	92.31%	106.06%					65.72%	43.82%	61.73%
利用者数 (人/日)	H21	4.05	4.33	4.00	3.50	2.90	4.00	3.71	3.79	3.84	3.89	4.95	3.73	3.89	-	3.79
	H22	4.00	5.39	4.86	4.76	3.73	5.30	5.50	5.05	4.58	3.21	4.26	3.77	4.53	-	4.82
	H23	5.30	4.58	5.50	5.15	3.04	3.45	3.70	3.35	3.47	3.16	2.76	2.38	3.82	-	4.26
	H24	3.95	4.43	4.86	5.24	3.22	3.63	4.23	3.57	3.47	2.84	3.37	3.30	3.84	-	4.14
	H25	3.38	2.95	2.05	2.00	2.18	2.89	1.18	1.65	1.42	1.26	1.00	1.35	1.94	-	2.29
	H26	1.19	1.35	1.52	1.23	1.14	0.75	1.09	1.94					1.28	-	1.28



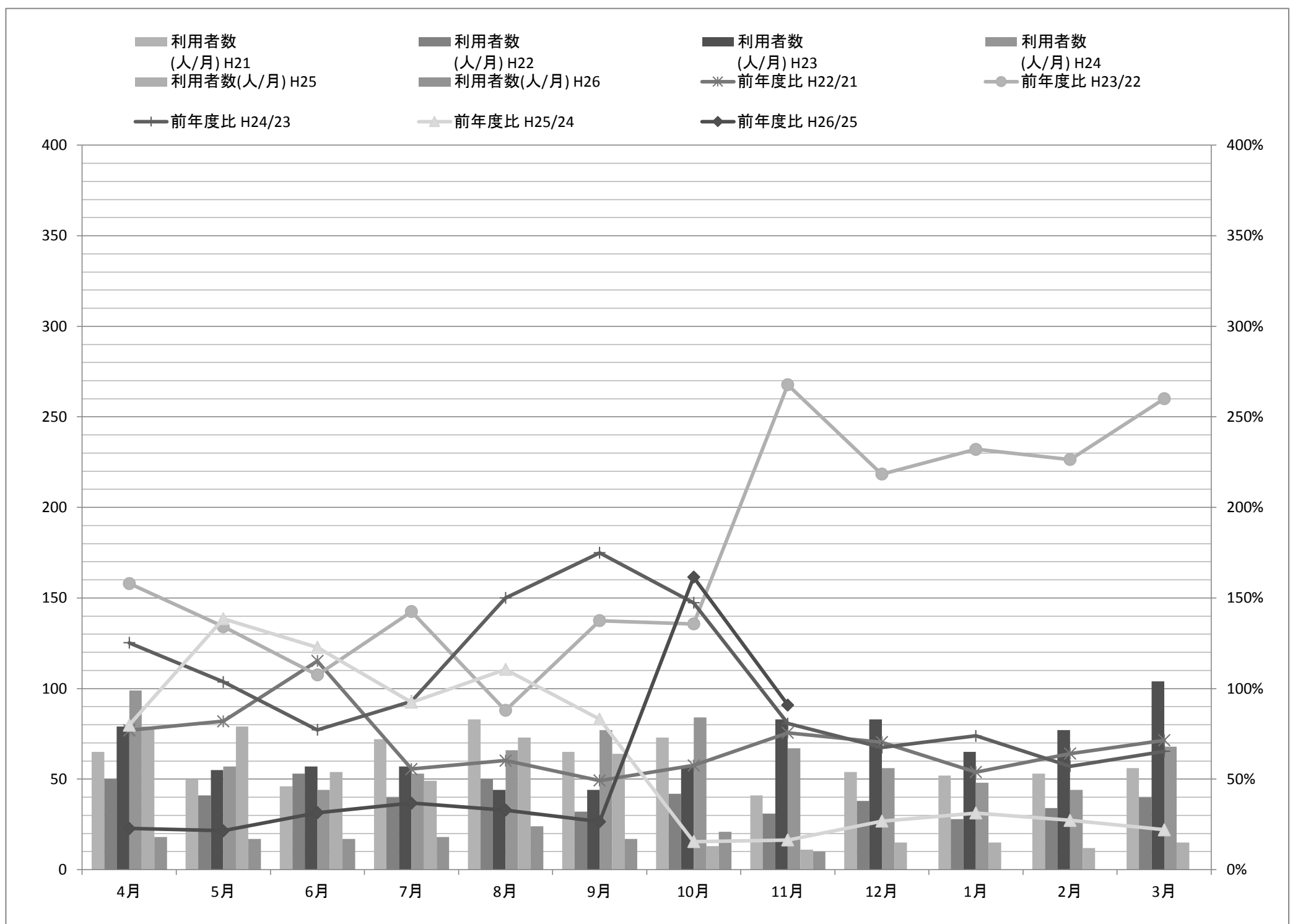
観音寺線

観音寺線		4月	5月	6月	7月	8月	9月	10月	11月	12月	1月	2月	3月	平均	合計	4-11月比
利用者数 (人/月)	H21	7	9	10	18	6	8	12	9	11	4	18	13	10.42	125	79
	H22	16	18	13	24	23	17	8	9	13	19	17	25	16.83	202	128
	H23	25	26	25	23	27	22	25	19	20	16	16	18	21.83	262	192
	H24	19	27	24	38	43	58	35	34	45	62	18	28	35.92	431	278
	H25	24	50	35	23	25	19	3	2	8	2	2	2	16.25	195	181
	H26	10	8	3	2	2	2	2	2	0				3.63	29	29
前年度比	H22/21	228.57%	200.00%	130.00%	133.33%	383.33%	212.50%	66.67%	100.00%	118.18%	475.00%	94.44%	192.31%	161.60%	161.60%	181.80%
	H23/22	156.25%	144.44%	192.31%	95.83%	117.39%	129.41%	312.50%	211.11%	153.85%	84.21%	94.12%	72.00%	129.70%	129.70%	169.91%
	H24/23	76.00%	103.85%	96.00%	165.22%	159.26%	263.64%	140.00%	178.95%	225.00%	387.50%	112.50%	155.56%	164.50%	164.50%	147.86%
	H25/24	126.32%	185.19%	145.83%	60.53%	58.14%	32.76%	8.57%	5.88%	17.78%	3.23%	11.11%	7.14%	45.24%	45.24%	77.90%
	H26/25	41.67%	16.00%	8.57%	8.70%	8.00%	10.53%	66.67%	0.00%					22.31%	14.87%	20.02%
利用者数 (人/日)	H21	0.33	0.50	0.45	0.82	0.29	0.42	0.57	0.47	0.58	0.21	0.95	0.59	0.52	-	0.48
	H22	0.76	1.00	0.59	1.14	1.05	0.85	0.40	0.45	0.68	1.00	0.89	1.14	0.83	-	0.78
	H23	1.25	1.37	1.14	1.15	1.17	1.10	1.25	0.95	1.05	0.84	0.76	0.86	1.07	-	1.17
	H24	0.95	1.29	1.14	1.81	1.87	3.05	1.59	1.62	2.37	3.26	0.95	1.40	1.77	-	1.67
	H25	1.14	2.38	1.75	1.05	1.14	1.00	0.14	0.10	0.42	0.11	0.11	0.10	0.79	-	1.09
	H26	0.48	0.40	0.14	0.09	0.10	0.10	0.09	0.09	0.00				0.17	-	0.17



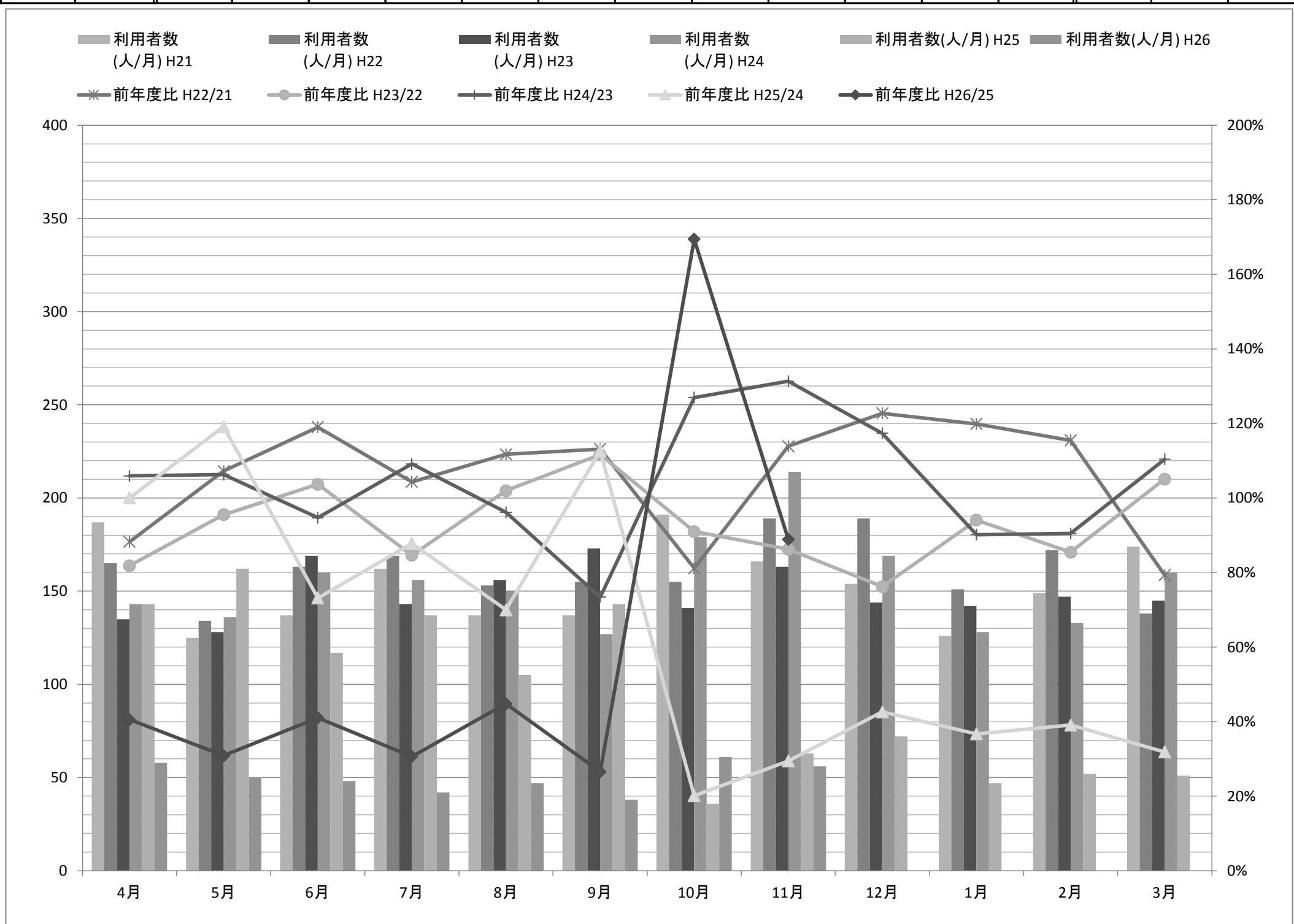
南加茂台線

南加茂台線		4月	5月	6月	7月	8月	9月	10月	11月	12月	1月	2月	3月	平均	合計	4-11月比
利用者数 (人/月)	H21	65	50	46	72	83	65	73	41	54	52	53	56	59.17	710	495
	H22	50	41	53	40	50	32	42	31	38	28	34	40	39.92	479	339
	H23	79	55	57	57	44	44	57	83	83	65	77	104	67.08	805	476
	H24	99	57	44	53	66	77	84	67	56	48	44	68	63.58	763	547
	H25	79	79	54	49	73	64	13	11	15	15	12	15	39.92	479	422
	H26	18	17	17	18	24	17	21	10					17.75	142	142
前年度比	H22/21	76.92%	82.00%	115.22%	55.56%	60.24%	49.23%	57.53%	75.61%	70.37%	53.85%	64.15%	71.43%	67.46%	67.46%	71.54%
	H23/22	158.00%	134.15%	107.55%	142.50%	88.00%	137.50%	135.71%	267.74%	218.42%	232.14%	226.47%	260.00%	168.06%	168.06%	146.39%
	H24/23	125.32%	103.64%	77.19%	92.98%	150.00%	175.00%	147.37%	80.72%	67.47%	73.85%	57.14%	65.38%	94.78%	94.78%	119.03%
	H25/24	79.80%	138.60%	122.73%	92.45%	110.61%	83.12%	15.48%	16.42%	26.79%	31.25%	27.27%	22.06%	62.78%	62.78%	82.40%
	H26/25	22.78%	21.52%	31.48%	36.73%	32.88%	26.56%	161.54%	90.91%					44.47%	29.65%	53.05%
利用者数 (人/日)	H21	3.10	2.78	2.09	3.27	3.95	3.42	3.48	2.16	2.84	2.74	2.79	2.55	2.93	-	3.03
	H22	2.38	2.28	2.41	1.90	2.27	1.60	2.10	1.55	2.00	1.47	1.79	1.82	1.96	-	2.06
	H23	3.95	2.89	2.59	2.85	1.91	2.20	2.85	4.15	4.37	3.42	3.67	4.95	3.32	-	2.92
	H24	4.95	2.71	2.10	2.52	2.87	4.05	3.82	3.19	2.95	2.53	2.32	3.40	3.12	-	3.28
	H25	3.76	3.76	2.70	2.23	3.32	3.37	0.59	0.55	0.79	0.79	0.63	0.75	1.94	-	2.53
	H26	0.86	0.85	0.81	0.82	1.14	0.85	0.95	0.56					0.85	-	0.85



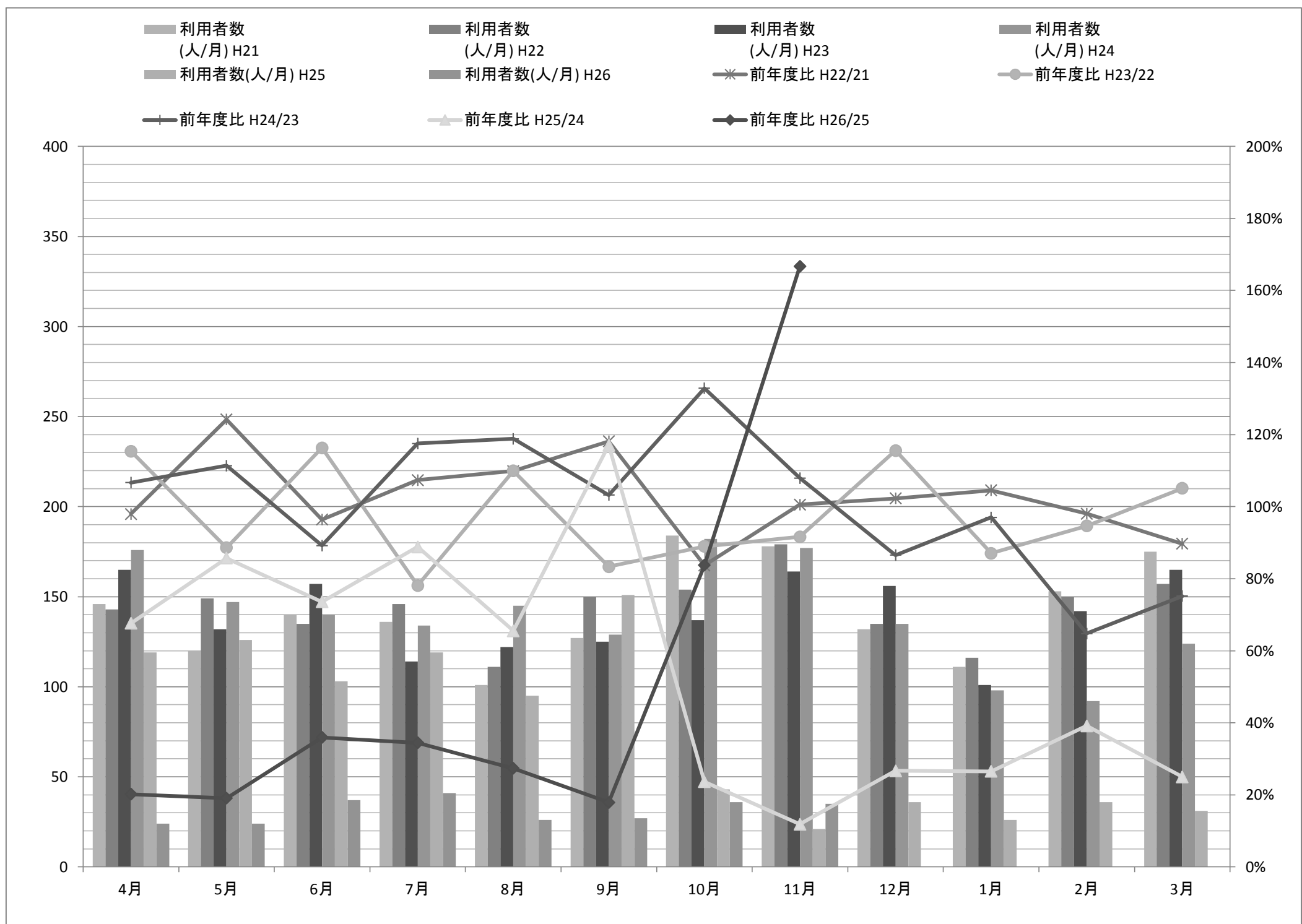
錢司線

錢司線		4月	5月	6月	7月	8月	9月	10月	11月	12月	1月	2月	3月	平均	合計	4-11月比
利用者数 (人/月)	H21	187	125	137	162	137	137	191	166	154	126	149	174	153.75	1,845	1,242
	H22	165	134	163	169	153	155	155	189	189	151	172	138	161.08	1,933	1,283
	H23	135	128	169	143	156	173	141	163	144	142	147	145	148.83	1,786	1,208
	H24	143	136	160	156	150	127	179	214	169	128	133	160	154.58	1,855	1,265
	H25	143	162	117	137	105	143	36	63	72	47	52	51	94.00	1,128	906
	H26	58	50	48	42	47	38	61	56					50.00	400	400
前年度比	H22/21	88.24%	107.20%	118.98%	104.32%	111.68%	113.14%	81.15%	113.86%	122.73%	119.84%	115.44%	79.31%	104.77%	104.77%	104.82%
	H23/22	81.82%	95.52%	103.68%	84.62%	101.96%	111.61%	90.97%	86.24%	76.19%	94.04%	85.47%	105.07%	92.40%	92.40%	94.55%
	H24/23	105.93%	106.25%	94.67%	109.09%	96.15%	73.41%	126.95%	131.29%	117.36%	90.14%	90.48%	110.34%	103.86%	103.86%	105.47%
	H25/24	100.00%	119.12%	73.13%	87.82%	70.00%	112.60%	20.11%	29.44%	42.60%	36.72%	39.10%	31.88%	60.81%	60.81%	76.53%
	H26/25	40.56%	30.86%	41.03%	30.66%	44.76%	26.57%	169.44%	88.89%					53.19%	35.46%	59.10%
利用者数 (人/日)	H21	8.90	6.94	6.23	7.36	6.52	7.21	9.10	8.74	8.11	6.63	7.84	7.91	7.62	-	7.63
	H22	7.86	7.44	7.41	8.05	6.95	7.75	7.75	9.45	9.95	7.95	9.05	6.27	7.99	-	7.83
	H23	6.75	6.74	7.68	7.15	6.78	8.65	7.05	8.15	7.58	7.47	7.00	6.90	7.33	-	7.37
	H24	7.15	6.48	7.62	7.43	6.52	6.68	8.14	10.19	8.89	6.74	7.00	8.00	7.57	-	7.53
	H25	6.81	7.71	5.85	6.23	4.77	7.53	1.64	3.15	3.79	2.47	2.74	2.55	4.60	-	5.46
	H26	2.76	2.50	2.29	1.91	2.24	1.90	2.77	3.11					2.43	-	2.43



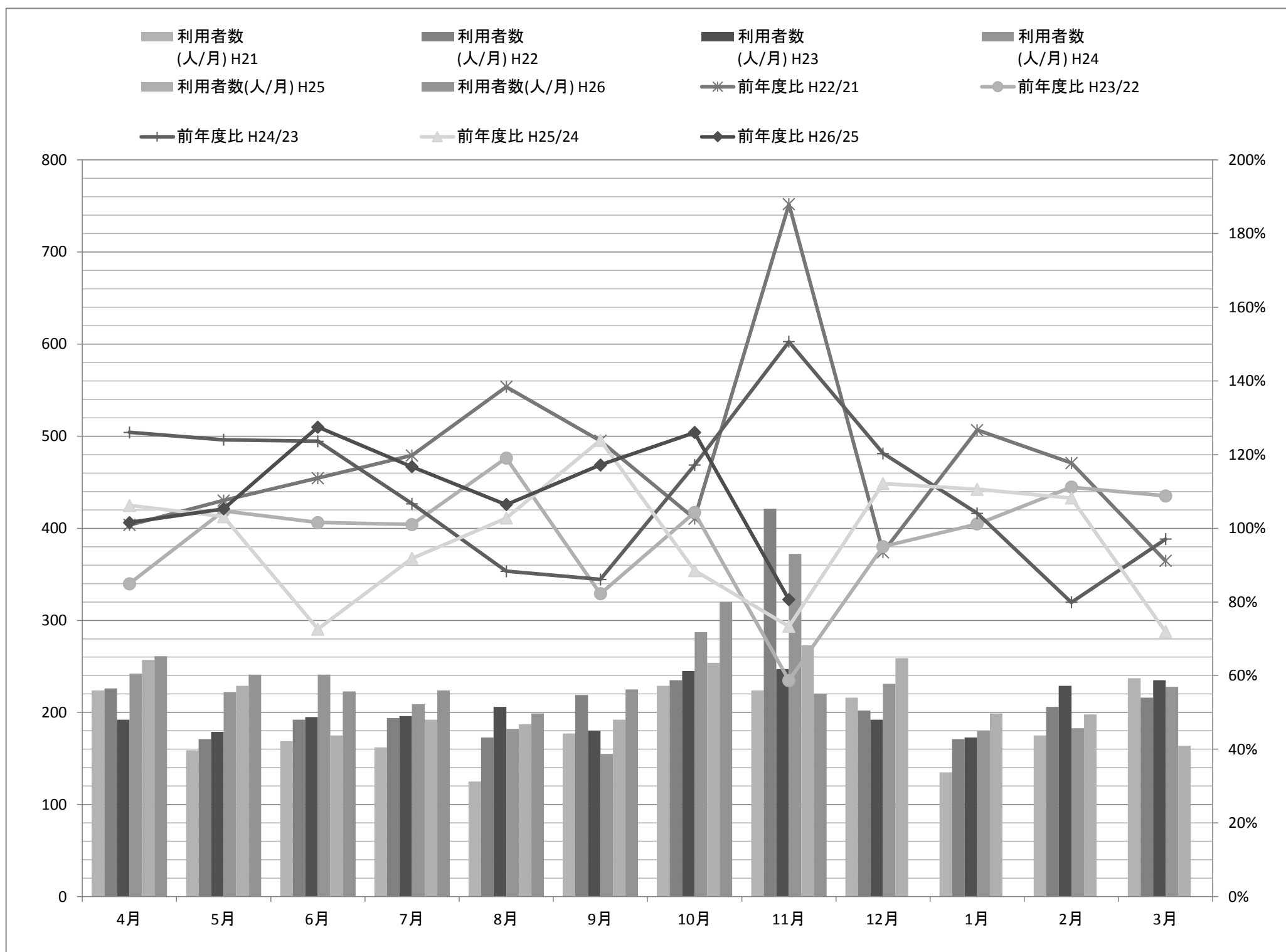
西線

西線		4月	5月	6月	7月	8月	9月	10月	11月	12月	1月	2月	3月	平均	合計	4-11月比
利用者数 (人/月)	H21	146	120	140	136	101	127	184	178	132	111	153	175	141.92	1,703	1,132
	H22	143	149	135	146	111	150	154	179	135	116	150	157	143.75	1,725	1,167
	H23	165	132	157	114	122	125	137	164	156	101	142	165	140.00	1,680	1,116
	H24	176	147	140	134	145	129	182	177	135	98	92	124	139.92	1,679	1,230
	H25	119	126	103	119	95	151	43	21	36	26	36	31	75.50	906	777
	H26	24	24	37	41	26	27	36	35					31.25	250	250
前年度比	H22/21	97.95%	124.17%	96.43%	107.35%	109.90%	118.11%	83.70%	100.56%	102.27%	104.50%	98.04%	89.71%	101.29%	101.29%	104.77%
	H23/22	115.38%	88.59%	116.30%	78.08%	109.91%	83.33%	88.96%	91.62%	115.56%	87.07%	94.67%	105.10%	97.39%	97.39%	96.52%
	H24/23	106.67%	111.36%	89.17%	117.54%	118.85%	103.20%	132.85%	107.93%	86.54%	97.03%	64.79%	75.15%	99.94%	99.94%	110.95%
	H25/24	67.61%	85.71%	73.57%	88.81%	65.52%	117.05%	23.63%	11.86%	26.67%	26.53%	39.13%	25.00%	53.96%	53.96%	66.72%
	H26/25	20.17%	19.05%	35.92%	34.45%	27.37%	17.88%	83.72%	166.67%					41.39%	27.59%	50.65%
利用者数 (人/日)	H21	6.95	6.67	6.36	6.18	4.81	6.68	8.76	9.37	6.95	5.84	8.05	7.95	7.05	-	6.97
	H22	6.81	8.28	6.14	6.95	5.05	7.50	7.70	8.95	7.11	6.11	7.89	7.14	7.13	-	7.17
	H23	8.25	6.95	7.14	5.70	5.30	6.25	6.85	8.20	8.21	5.32	6.76	7.86	6.90	-	6.83
	H24	8.80	7.00	6.67	6.38	6.30	6.79	8.27	8.43	7.11	5.16	4.84	6.20	6.83	-	7.33
	H25	5.67	6.00	5.15	5.41	4.32	7.95	1.95	1.05	1.89	1.37	1.89	1.55	3.68	-	4.69
	H26	1.14	1.20	1.76	1.86	1.24	1.35	1.64	1.94					1.52	-	1.52



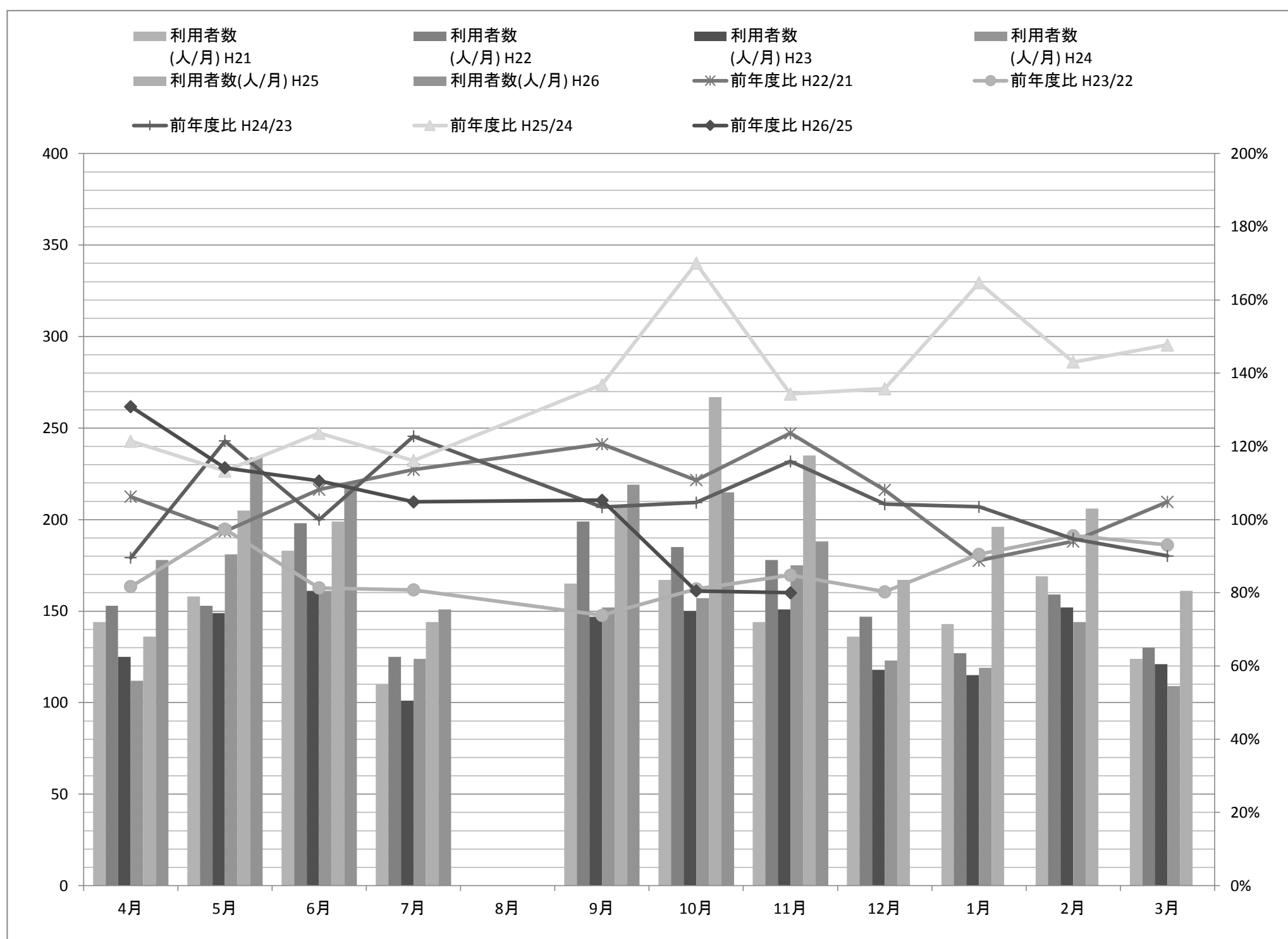
奥畑線

奥畑線		4月	5月	6月	7月	8月	9月	10月	11月	12月	1月	2月	3月	平均	合計	4-11月比
利用者数 (人/月)	H21	224	159	169	162	125	177	229	224	216	135	175	237	186.00	2,232	1,469
	H22	226	171	192	194	173	219	235	421	202	171	206	216	218.83	2,626	1,831
	H23	192	179	195	196	206	180	245	247	192	173	229	235	205.75	2,469	1,640
	H24	242	222	241	209	182	155	287	372	231	180	183	228	227.67	2,732	1,910
	H25	257	229	175	192	187	192	254	273	259	199	198	164	214.92	2,579	1,759
	H26	261	241	223	224	199	225	320	220					239.13	1,913	1,913
前年度比	H22/21	100.89%	107.55%	113.61%	119.75%	138.40%	123.73%	102.62%	187.95%	93.52%	126.67%	117.71%	91.14%	117.65%	117.65%	124.31%
	H23/22	84.96%	104.68%	101.56%	101.03%	119.08%	82.19%	104.26%	58.67%	95.05%	101.17%	111.17%	108.80%	94.02%	94.02%	94.55%
	H24/23	126.04%	124.02%	123.59%	106.63%	88.35%	86.11%	117.14%	150.61%	120.31%	104.05%	79.91%	97.02%	110.65%	110.65%	115.31%
	H25/24	106.20%	103.15%	72.61%	91.87%	102.75%	123.87%	88.50%	73.39%	112.12%	110.56%	108.20%	71.93%	94.40%	94.40%	95.29%
	H26/25	101.56%	105.24%	127.43%	116.67%	106.42%	117.19%	125.98%	80.59%					111.26%	74.18%	110.13%
利用者数 (人/日)	H21	10.67	8.83	7.68	7.36	5.95	9.32	10.90	11.79	11.37	7.11	9.21	10.77	9.25	-	9.06
	H22	10.76	9.50	8.73	9.24	7.86	10.95	11.75	21.05	10.63	9.00	10.84	9.82	10.84	-	11.23
	H23	9.60	9.42	8.86	9.80	8.96	9.00	12.25	12.35	10.11	9.11	10.90	11.19	10.13	-	10.03
	H24	12.10	10.57	11.48	9.95	7.91	8.16	13.05	17.71	12.16	9.47	9.63	11.40	11.13	-	11.37
	H25	12.24	10.90	8.75	8.73	8.50	10.11	11.55	13.65	13.63	10.47	10.42	8.20	10.60	-	10.55
	H26	12.43	12.05	10.62	10.18	9.48	11.25	14.55	12.22					11.60	-	11.60



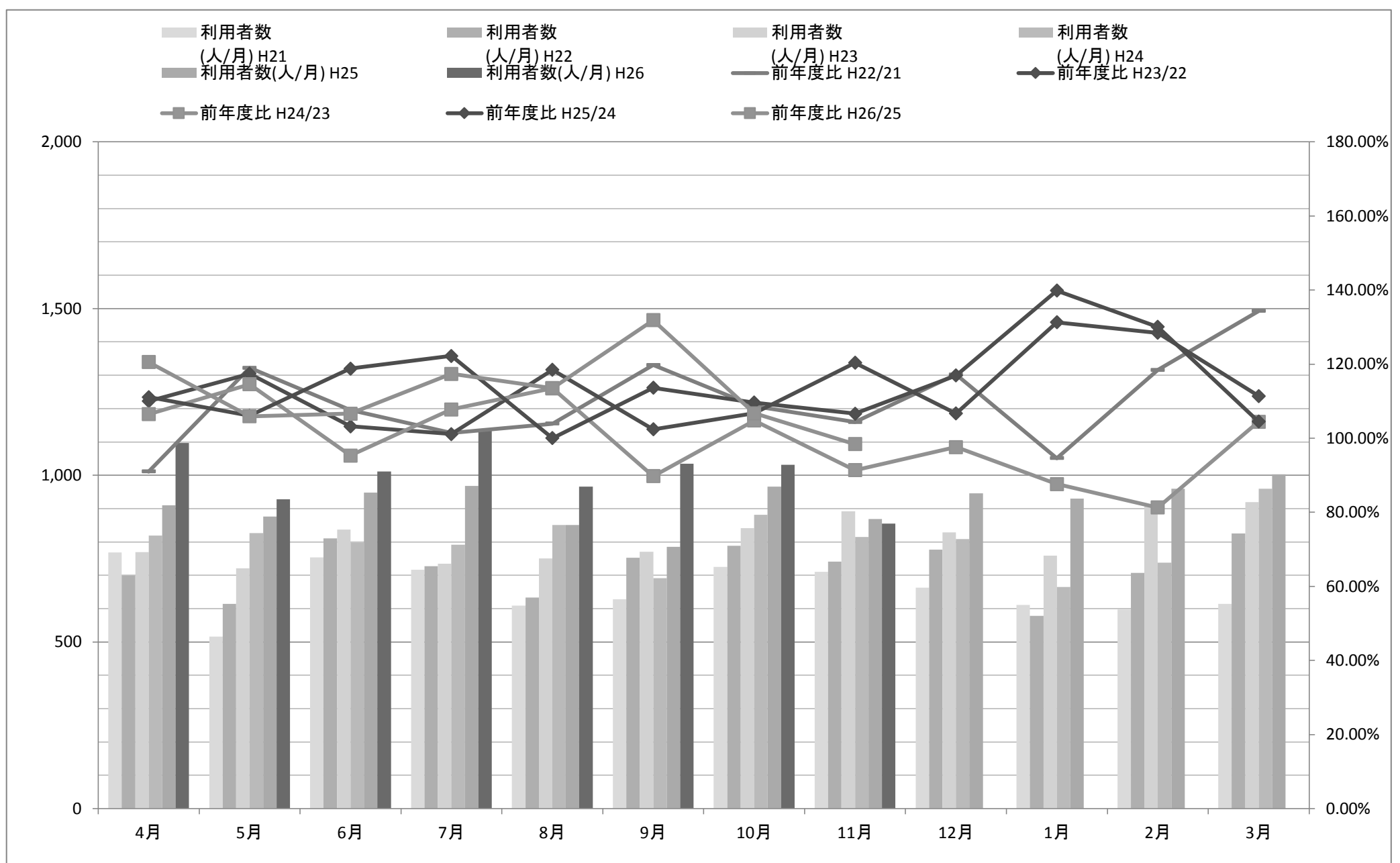
通学線

通学線		4月	5月	6月	7月	8月	9月	10月	11月	12月	1月	2月	3月	平均	合計	4-11月比
利用者数 (人/月)	H21	144	158	183	110	-	165	167	144	136	143	169	124	149.36	1,643	1,071
	H22	153	153	198	125	-	199	185	178	147	127	159	130	159.45	1,754	1,191
	H23	125	149	161	101	-	147	150	151	118	115	152	121	135.45	1,490	984
	H24	112	181	161	124	-	152	157	175	123	119	144	109	141.55	1,557	1,062
	H25	136	205	199	144	-	208	267	235	167	196	206	161	193.09	2,124	1,394
	H26	178	234	220	151	-	219	215	188					200.71	1,405	1,405
前年度比	H22/21	106.25%	96.84%	108.20%	113.64%	-	120.61%	110.78%	123.61%	108.09%	88.81%	94.08%	104.84%	106.76%	106.76%	111.42%
	H23/22	81.70%	97.39%	81.31%	80.80%	-	73.87%	81.08%	84.83%	80.27%	90.55%	95.60%	93.08%	84.95%	84.95%	83.00%
	H24/23	89.60%	121.48%	100.00%	122.77%	-	103.40%	104.67%	115.89%	104.24%	103.48%	94.74%	90.08%	104.50%	104.50%	108.26%
	H25/24	121.43%	113.26%	123.60%	116.13%	-	136.84%	170.06%	134.29%	135.77%	164.71%	143.06%	147.71%	136.42%	136.42%	130.80%
	H26/25	130.88%	114.15%	110.55%	104.86%	-	105.29%	80.52%	80.00%	0.00%	0.00%	0.00%	0.00%	103.95%	66.15%	103.75%
利用者数 (人/日)	H21	6.86	8.78	8.32	5.00	-	8.68	7.95	7.58	7.56	9.53	8.89	7.29	7.86	-	7.60
	H22	8.50	8.50	9.00	9.62	-	9.95	9.25	8.90	8.65	8.47	8.37	7.65	8.81	-	9.10
	H23	7.35	7.84	7.32	7.77	-	7.35	7.50	7.55	7.38	7.19	7.24	7.56	7.46	-	7.53
	H24	7.00	8.62	7.67	8.86	-	7.95	7.14	8.33	8.20	7.00	7.58	7.27	7.78	-	7.94
	H25	8.50	9.76	9.95	10.29	-	10.95	12.14	11.75	10.44	11.53	10.84	10.73	10.62	-	10.48
	H26	8.48	11.70	10.48	10.79	-	10.95	9.77	10.44					10.37	-	10.37



山城線

山城線		4月	5月	6月	7月	8月	9月	10月	11月	12月	1月	2月	3月	平均	合計	4-11月比
利用者数 (人/月)	H21	768	516	754	717	609	628	725	710	663	611	597	614	659	7,912	5,427
	H22	699	614	811	727	633	752	788	741	777	578	707	825	721	8,652	5,765
	H23	769	721	837	735	750	770	841	892	829	759	908	919	811	9,730	6,315
	H24	819	826	798	792	851	691	881	815	809	665	738	960	804	9,645	6,473
	H25	910	876	948	968	851	785	966	869	946	930	960	1,003	918	11,012	7,173
	H26	1,097	928	1,011	1,136	966	1,035	1,031	855					1,007	8,059	8,059
前年度比	H22/21	91.02%	118.99%	107.56%	101.39%	103.94%	119.75%	108.69%	104.37%	117.19%	94.60%	118.43%	134.36%	109.35%	109.35%	106.96%
	H23/22	110.01%	117.43%	103.21%	101.10%	118.48%	102.39%	106.73%	120.38%	106.69%	131.31%	128.43%	111.39%	112.46%	112.46%	109.97%
	H24/23	106.50%	114.56%	95.34%	107.76%	113.47%	89.74%	104.76%	91.37%	97.59%	87.62%	81.28%	104.46%	99.13%	99.13%	102.94%
	H25/24	111.11%	106.05%	118.80%	122.22%	100.00%	113.60%	109.65%	106.63%	116.93%	139.85%	130.08%	104.48%	114.17%	114.17%	111.01%
	H26/25	120.55%	105.94%	106.65%	117.36%	113.51%	131.85%	106.73%	98.39%					109.78%	73.18%	112.62%
利用者数 (人/日)	H21	36.57	28.67	34.27	32.59	29.00	33.05	34.52	37.37	34.89	32.16	31.42	27.91	32.70	-	33.26
	H22	33.29	34.11	36.86	34.62	28.77	37.60	39.40	37.05	40.89	30.42	37.21	37.50	35.64	-	35.21
	H23	38.45	37.95	38.05	36.75	32.61	38.50	42.05	44.60	43.63	39.95	43.24	43.76	39.96	-	38.62
	H24	40.95	39.33	38.00	37.71	37.00	36.37	40.05	38.81	42.58	35.00	38.84	48.00	39.39	-	38.53
	H25	43.33	41.71	47.40	44.00	38.68	41.32	43.91	43.45	49.79	48.95	50.53	50.15	45.27	-	42.98
	H26	52.24	46.40	48.14	51.64	46.00	51.75	46.86	47.50					48.82	-	48.82



神童子線

神童子線		4月	5月	6月	7月	8月	9月	10月	11月	12月	1月	2月	3月	平均	合計	4-11月比
利用者数 (人/月)	平成21年度	16	18	15	17	11	15	11	11	9	10	10	13	13.00	156	114
	平成22年度	9	12	11	5	6	10	16	8	14	6	8	9	9.50	114	77
	平成23年度	9	8	11	12	10	4	11	21	1	5	6	12	9.17	110	86
	平成24年度	7	11	16	7	6	5	10	15	17	2	7	5	9.00	108	77
	平成25年度	9	3	5	3	0	5	4	2	4	8	0	3	3.83	46	31
	平成26年度	0	3	1	2	3	1	3	7					2.50	20	20
前年度比	H22/21	56.25%	66.67%	73.33%	29.41%	54.55%	66.67%	145.45%	72.73%	155.56%	60.00%	80.00%	69.23%	73.08%	73.08%	70.63%
	H23/22	100.00%	66.67%	100.00%	240.00%	166.67%	40.00%	68.75%	262.50%	7.14%	83.33%	75.00%	133.33%	96.49%	96.49%	130.57%
	H24/23	77.78%	137.50%	145.45%	58.33%	60.00%	125.00%	90.91%	71.43%	1700.00%	40.00%	116.67%	41.67%	98.18%	98.18%	95.80%
	H25/24	128.57%	27.27%	31.25%	42.86%	0.00%	100.00%	40.00%	13.33%	23.53%	400.00%	0.00%	60.00%	42.59%	42.59%	47.91%
	H26/25	0.00%	100.00%	20.00%	66.67%	-	20.00%	75.00%	350.00%					65.22%	43.48%	90.24%
利用者数 (人/日)	平成21年度	0.76	1.00	0.68	0.77	0.52	0.79	0.52	0.58	0.47	0.53	0.53	0.59	0.65	-	0.70
	平成22年度	0.43	0.67	0.50	0.24	0.27	0.50	0.80	0.40	0.74	0.32	0.42	0.41	0.47	-	0.48
	平成23年度	0.45	0.42	0.50	0.60	0.43	0.20	0.55	1.05	0.05	0.26	0.29	0.57	0.45	-	0.53
	平成24年度	0.35	0.52	0.76	0.33	0.26	0.26	0.45	0.71	0.89	0.11	0.37	0.25	0.44	-	0.46
	平成25年度	0.43	0.14	0.25	0.14	0.00	0.26	0.18	0.10	0.21	0.42	0.00	0.15	0.19	-	0.19
	平成26年度	0.00	0.14	0.05	0.09	0.14	0.05	0.14	0.39					0.12	-	0.12

