

# Duration of inundation

2

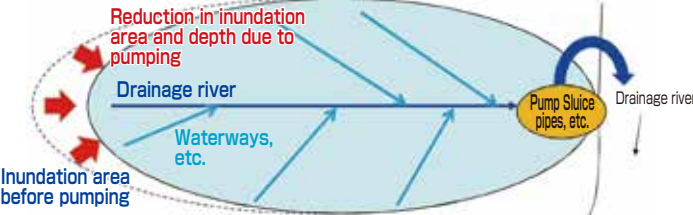


## About Inundation Duration

An estimate of the length of time that flooding will exceed a 50 cm depth, a level that makes evacuation difficult. This information can be used when deciding if you need to evacuate (horizontal evacuation). In areas where the inundation duration may be prolonged, if residents do not evacuate, they may become isolated as outdoor evacuation becomes difficult, causing disruptions to daily life, such as the inability to use electricity, gas, water, or toilets. Those residing in areas with a risk of extended inundation duration should evacuate in advance. It is also important to stock up on emergency food and supplies based on the anticipated inundation duration.

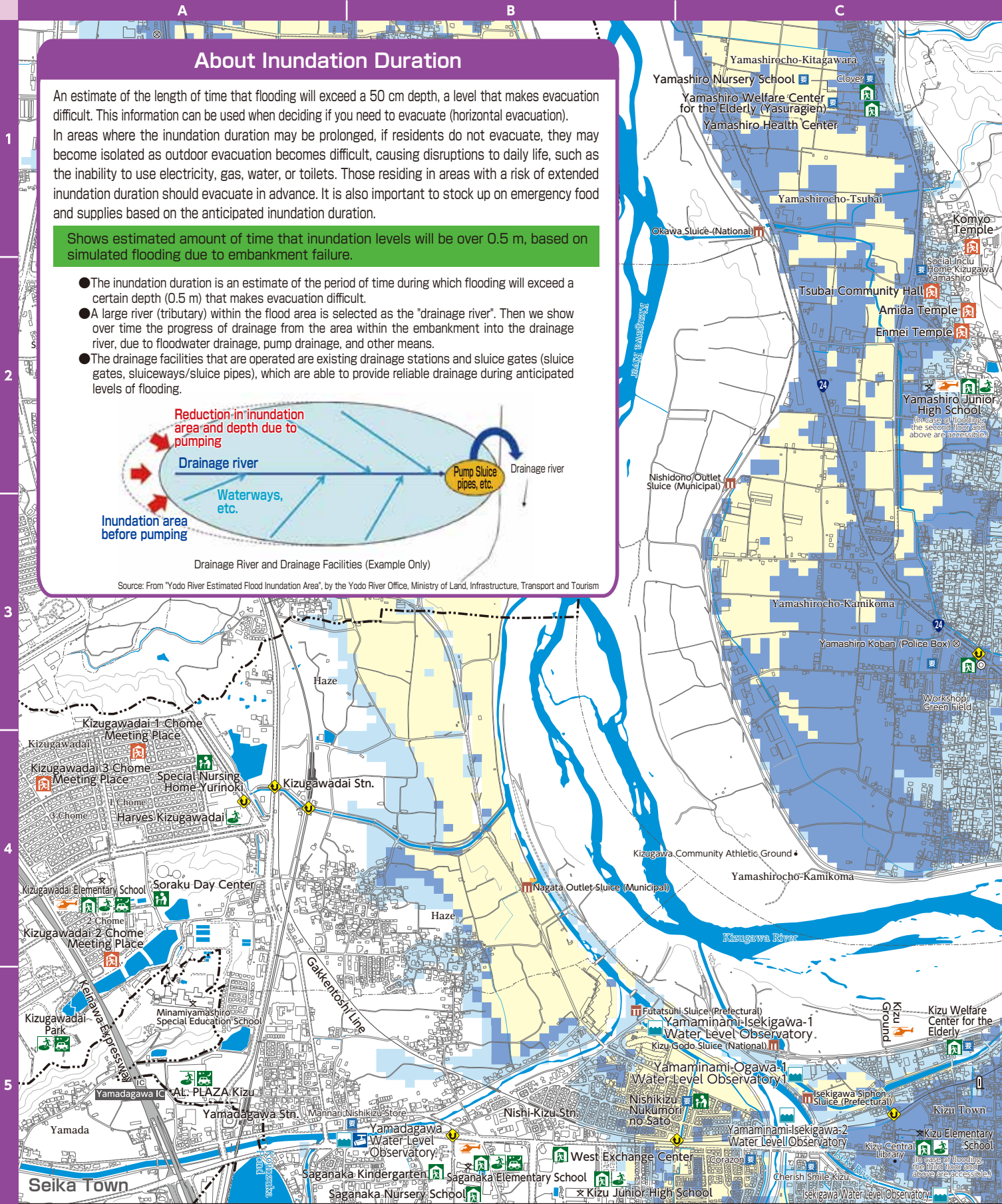
Shows estimated amount of time that inundation levels will be over 0.5 m, based on simulated flooding due to embankment failure.

- The inundation duration is an estimate of the period of time during which flooding will exceed a certain depth (0.5 m) that makes evacuation difficult.
- A large river (tributary) within the flood area is selected as the "drainage river". Then we show over time the progress of drainage from the area within the embankment into the drainage river, due to floodwater drainage, pump drainage, and other means.
- The drainage facilities that are operated are existing drainage stations and sluice gates (sluice gates, sluiceways/sluice pipes), which are able to provide reliable drainage during anticipated levels of flooding.



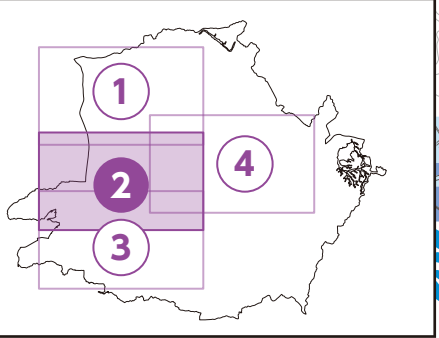
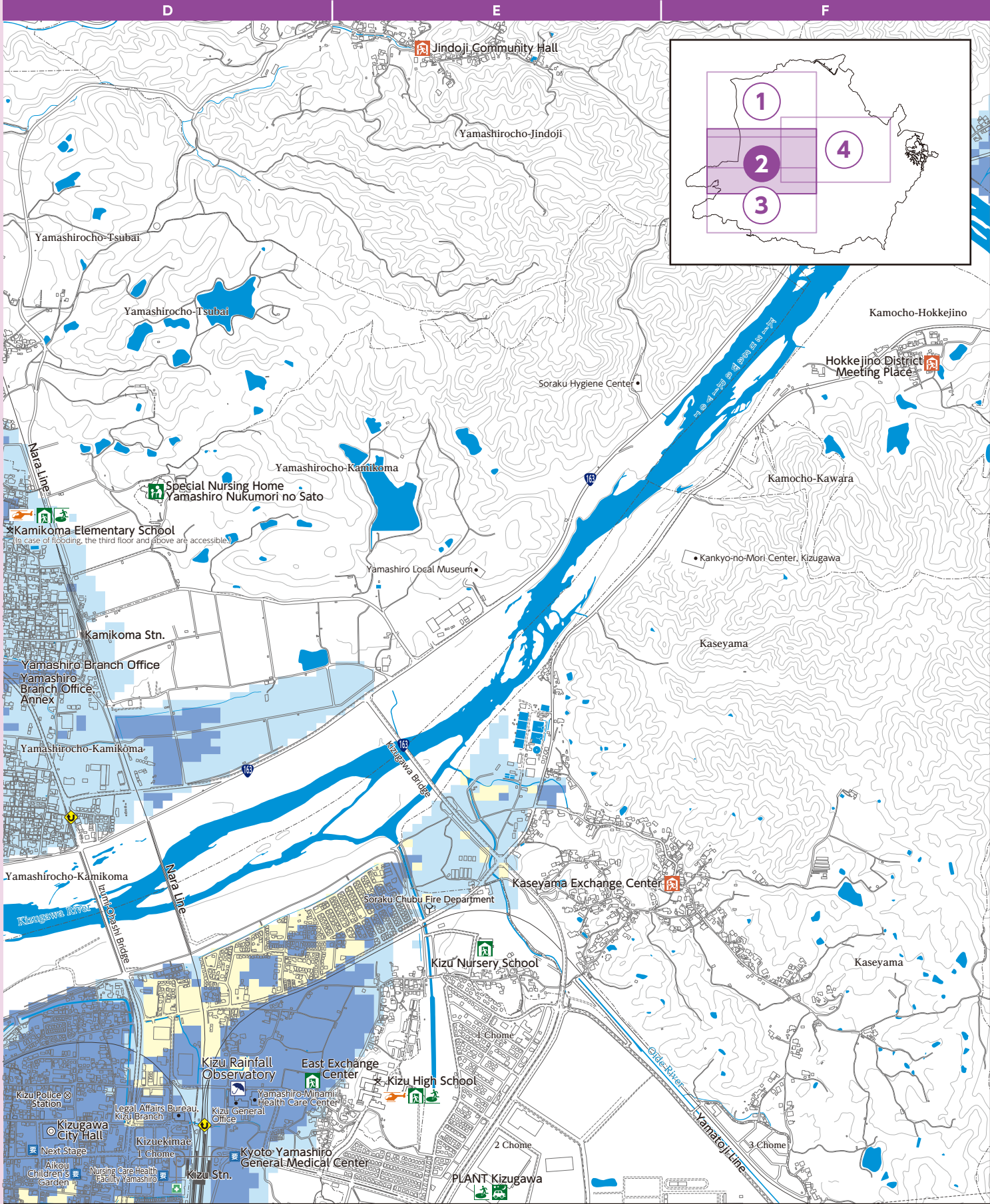
Drainage River and Drainage Facilities (Example Only)

Source: From "Yodo River Estimated Flood Inundation Area", by the Yodo River Office, Ministry of Land, Infrastructure, Transport and Tourism



Legend			

Duration of inundation		Up to less than 12 hours
		Up to less than 24 hours
		Up to less than 3 days
		Up to less than 7 days



(All rights reserved) © 2025 ZENRIN CO., LTD.