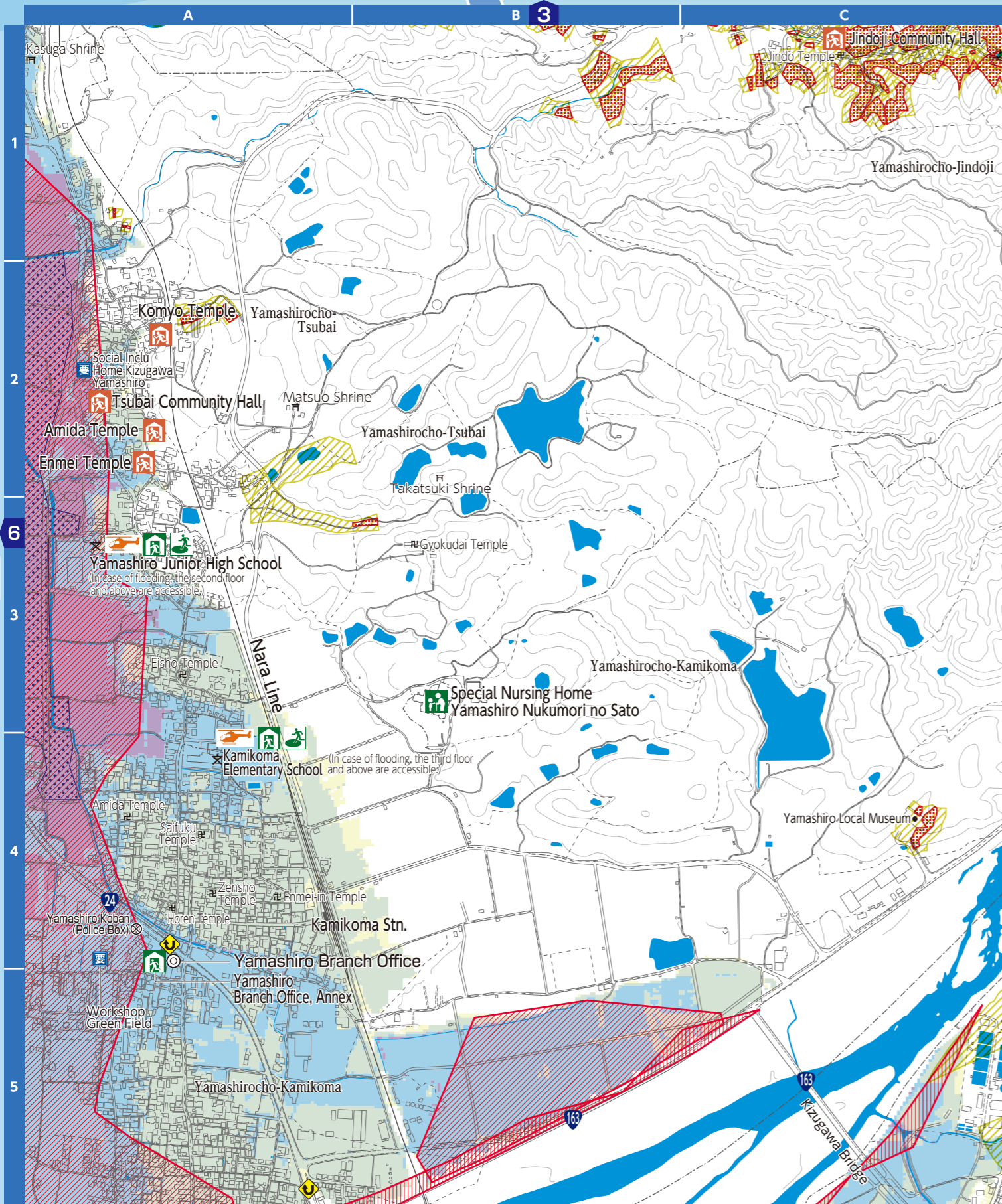


# Flood/Landslide

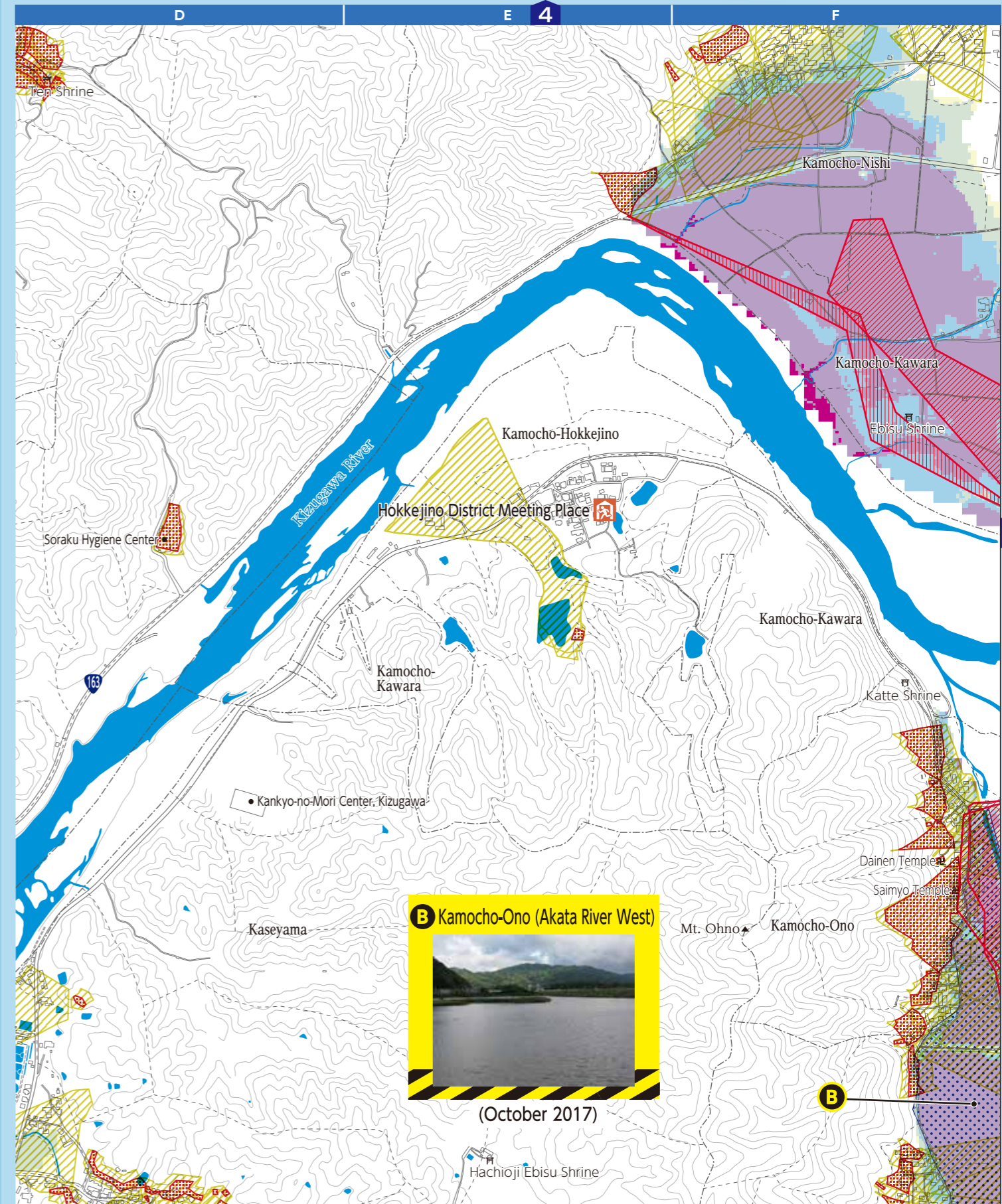


0 100 200 300 400m 1/10,000

- |  |   |  |   |  |                                       |
|--|---|--|---|--|---------------------------------------|
|  | Designated emergency evacuation locations |  | Community Evacuation Centers  |  | Underpass that is at risk of flooding |
|  | Designated evacuation centers             |  | Helicopter landing/take-off location  |  | Water Level Observatory               |
|  | Site for overnight evacuation in a car    |  | Public hospital   |  | CCTV camera                           |
|  | Supported evacuation centers              |  | Facility for persons requiring special assistance in the area to be alerted |  | Rainfall observatory                  |
|  |   |  | Sluice  |  | Natural disaster memorial             |
|  |   |  |   |  | Past disaster damage                  |



- |  |                            |  |                             |  |  |
|--|----------------------------|--|-----------------------------|--|--|
|  | Up to less than 3.0 meters |  | Up to less than 20.0 meters |  |  |
|  | Up to less than 0.5 meters |  | Up to less than 10.0 meters |  |  |
|  | Record of past flooding    |  | Up to less than 5.0 meters  |  |  |



(October 2017)