

木津川市コミュニティバス利用者数の推移(4~2月比)

平成27年2月末現在

	H21年度		H22年度		H23年度		H24年度		H25年度		H26年度	
			増減数	増減率	増減数	増減率	増減数	増減率	増減数	増減率	増減数	増減率
きのつ 合計 ※1	320,598		246,393		225,913		223,098		217,609		208,343	
			-74,205	76.85%	-20,480	91.69%	-2,815	98.75%	-5,489	97.54%	-9,266	95.74%
きのつ 木-1 (梅谷高の原線)	125,842	料 金 改 定	95,401		88,022		89,838		85,356		82,008	
			-30,441	75.81%	-7,379	92.27%	1,816	102.06%	-4,482	95.01%	-3,348	96.08%
きのつ 木-2 (鹿背山高の原線)	75,560		58,865		49,839		48,450		46,049		42,701	
			-16,695	77.90%	-9,026	84.67%	-1,389	97.21%	-2,401	95.04%	-3,348	92.73%
きのつ 木-3 (木津川台高の原線)	119,196		92,127		88,052		84,810		86,204		83,634	
			-27,069	77.29%	-4,075	95.58%	-3,242	96.32%	1,394	101.64%	-2,570	97.02%
当尾線 ※2	20,633		16,893		15,571		17,354		16,735		16,470	
			-3,740	81.87%	-1,322	92.17%	1,783	111.45%	-619	96.43%	-265	98.42%
加茂線 合計 ※2	10,048		10,645		9,903		10,073		7,799		5,771	
			597	105.94%	-742	93.03%	170	101.72%	-2,274	77.42%	-2,028	74.00%
山田線 ※3	1,713		1,616		1,318		894		362		129	
			-97	94.34%	-298	81.56%	-424	67.83%	-532	40.49%	-233	35.64%
大畑線 ※3	856		1,016		881		879		450		265	
			160	118.69%	-135	86.71%	-2	99.77%	-429	51.19%	-185	58.89%
観音寺線 ※3	112		177		244		403		193		34	
			65	158.04%	67	137.85%	159	165.16%	-210	47.89%	-159	17.62%
南加茂台線 ※3	654		439		701		695		464		186	
			-215	67.13%	262	159.68%	-6	99.14%	-231	66.76%	-278	40.09%
奥畑線	1,995		2,410		2,234		2,504		2,415		2,396	
			415	120.80%	-176	92.70%	270	112.09%	-89	96.45%	-19	99.21%
銭司線 ※3	1,671		1,795		1,641		1,695		1,077		498	
			124	107.42%	-154	91.42%	54	103.29%	-618	63.54%	-579	46.24%
西線 ※3	1,528		1,568		1,515		1,555		875		341	
			40	102.62%	-53	96.62%	40	102.64%	-680	56.27%	-534	38.97%
通学線	1,519		1,624		1,369		1,448		1,963		1,922	
			105	106.91%	-255	84.30%	79	105.77%	515	135.57%	-41	97.91%
山城線 ※2	7,298		7,827		8,811		8,685		10,009		10,756	
			529	107.25%	984	112.57%	-126	98.57%	1,324	115.24%	747	107.46%
神童子線 ※2	143		105		98		103		43		25	
			-38	73.43%	-7	93.33%	5	105.10%	-60	41.75%	-18	58.14%
合計	358,720		281,863		260,296		259,313		252,195		241,365	
			-76,857	78.57%	-21,567	92.35%	-983	99.62%	-7,118	97.25%	-10,830	95.71%

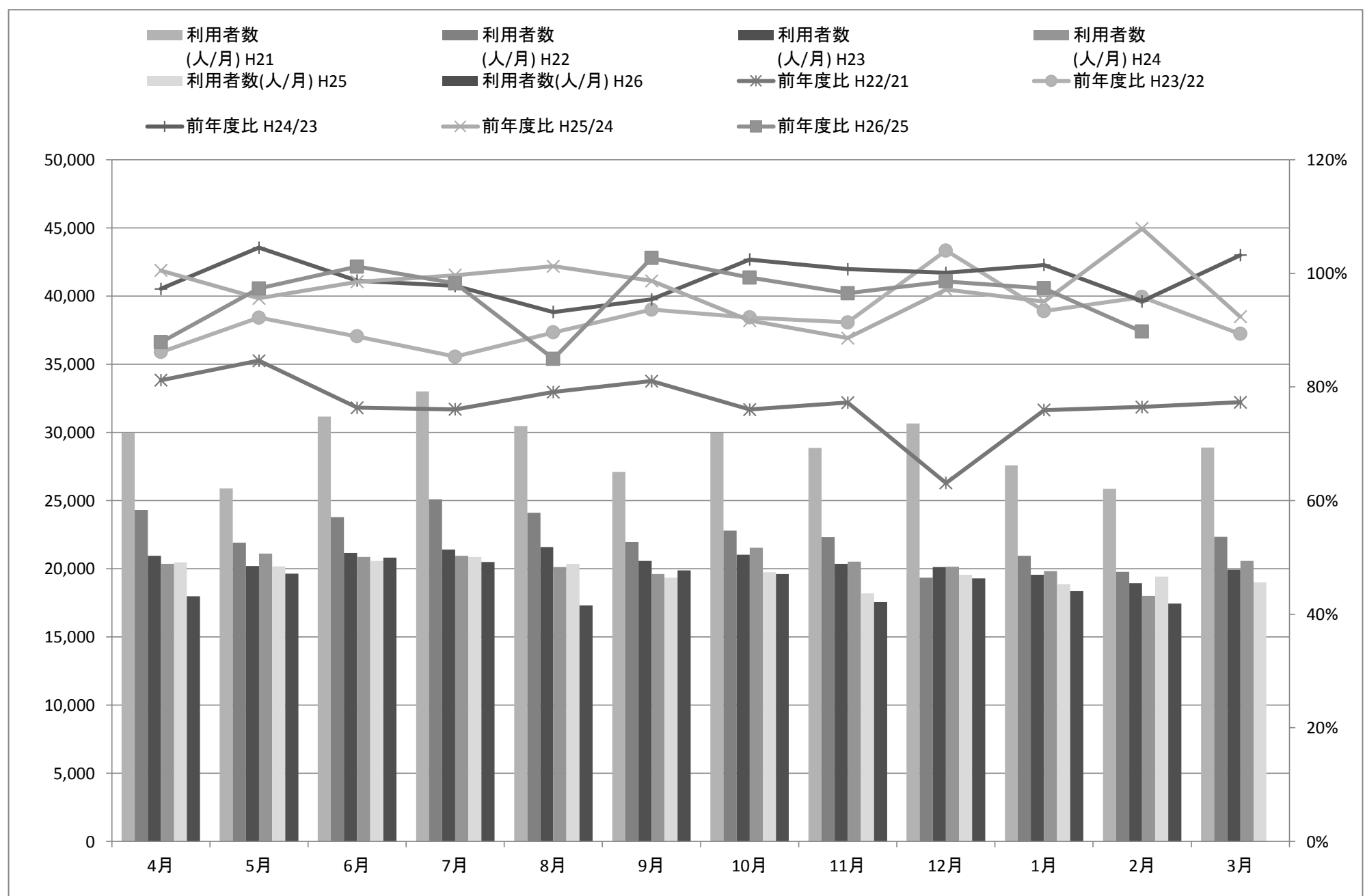
※1 平成22年 3月 運賃改定

※2 平成20年11月 路線再編

※3 平成25年10月 定時路線から予約型乗合タクシーへ変更

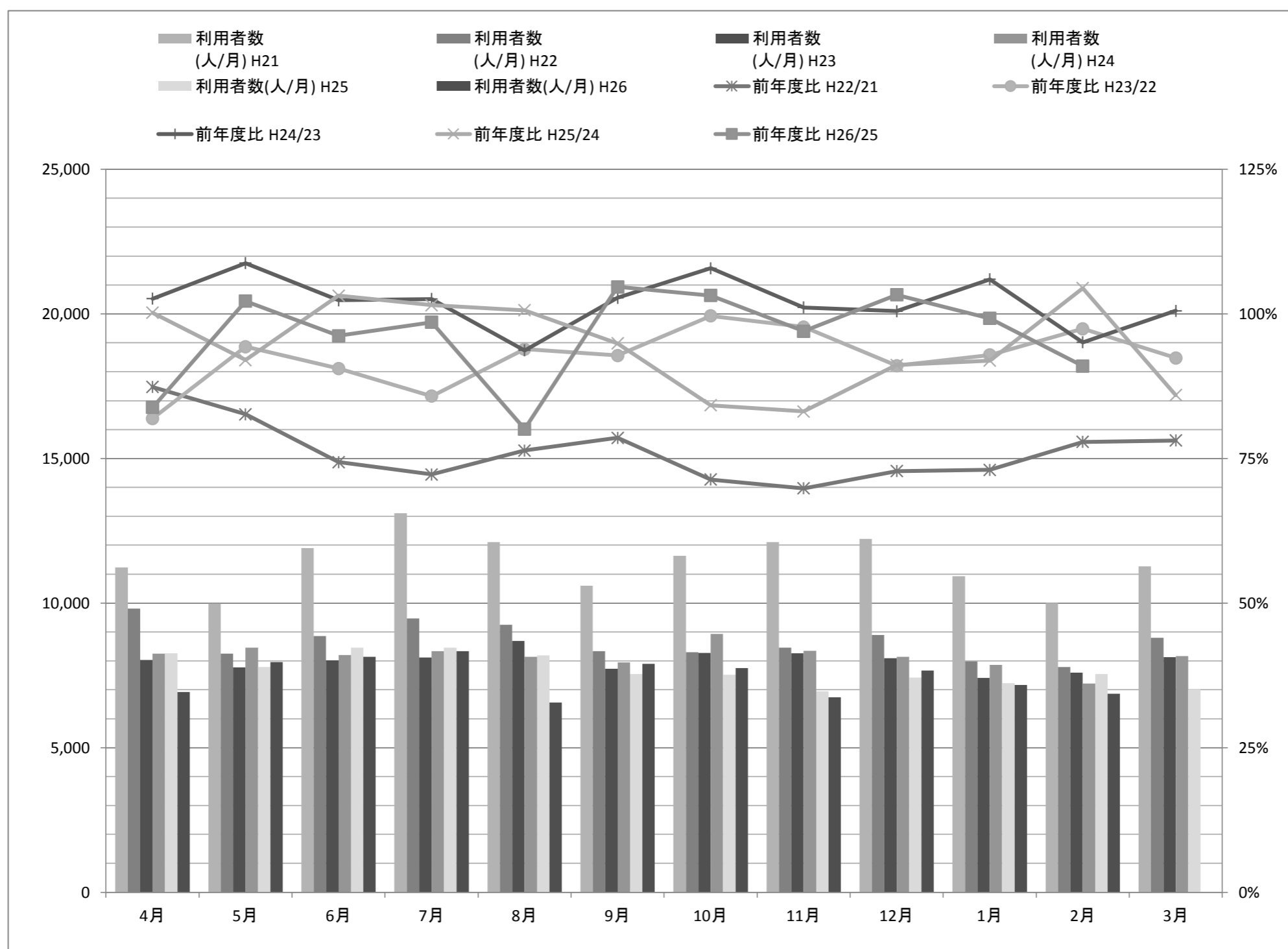
きのつバス合計

きのつバス合計		4月	5月	6月	7月	8月	9月	10月	11月	12月	1月	2月	3月	平均	合計	4-2月比
利用者数 (人/月)	H21	29,955	25,903	31,174	33,003	30,474	27,105	29,999	28,870	30,665	27,587	25,863	28,882	29,123	349,480	320,598
	H22	24,320	21,922	23,795	25,099	24,110	21,965	22,807	22,301	19,353	20,943	19,778	22,328	22,393	268,721	246,393
	H23	20,944	20,207	21,153	21,415	21,598	20,563	21,034	20,374	20,126	19,550	18,949	19,944	20,488	245,857	225,913
	H24	20,368	21,117	20,878	20,938	20,126	19,617	21,545	20,521	20,141	19,833	18,014	20,583	20,307	243,681	223,098
	H25	20,468	20,187	20,570	20,870	20,373	19,356	19,751	18,184	19,561	18,853	19,436	19,011	19,718	236,620	217,609
	H26	17,982	19,650	20,809	20,498	17,306	19,876	19,603	17,547	19,282	18,353	17,437		18,940	208,343	208,343
前年度比	H22/21	81.19%	84.63%	76.33%	76.05%	79.12%	81.04%	76.03%	77.25%	63.11%	75.92%	76.47%	77.31%	-	76.89%	76.85%
	H23/22	86.12%	92.18%	88.90%	85.32%	89.58%	93.62%	92.23%	91.36%	103.99%	93.35%	95.81%	89.32%	-	91.49%	91.69%
	H24/23	97.25%	104.50%	98.70%	97.77%	93.18%	95.40%	102.43%	100.72%	100.07%	101.45%	95.07%	103.20%	-	99.11%	98.75%
	H25/24	100.49%	95.60%	98.52%	99.68%	101.23%	98.67%	91.67%	88.61%	97.12%	95.06%	107.89%	92.36%	-	97.10%	97.54%
	H26/25	87.85%	97.34%	101.16%	98.22%	84.95%	102.69%	99.25%	96.50%	98.57%	97.35%	89.71%		-	-	95.74%
利用者数 (人/日)	H21	998.50	835.58	1039.13	1064.61	983.03	903.50	967.71	962.33	989.19	889.90	923.68	931.68	-	957.48	959.87
	H22	810.67	707.16	793.17	809.65	777.74	732.17	735.71	743.37	757.32	675.58	706.36	720.26	-	736.22	737.70
	H23	698.13	651.84	705.10	690.81	696.71	685.43	678.52	679.13	649.23	630.65	653.41	643.35	-	673.58	674.37
	H24	678.93	681.19	695.93	675.42	649.23	653.90	695.00	684.03	649.71	639.77	643.36	663.97	-	667.62	667.96
	H25	682.27	651.19	685.67	673.23	657.19	645.20	637.13	606.13	631.00	608.16	694.14	613.26	-	648.27	651.52
	H26	599.40	633.87	693.63	661.23	558.26	662.53	632.35	584.90	622.00	592.03	622.75		-	-	623.78



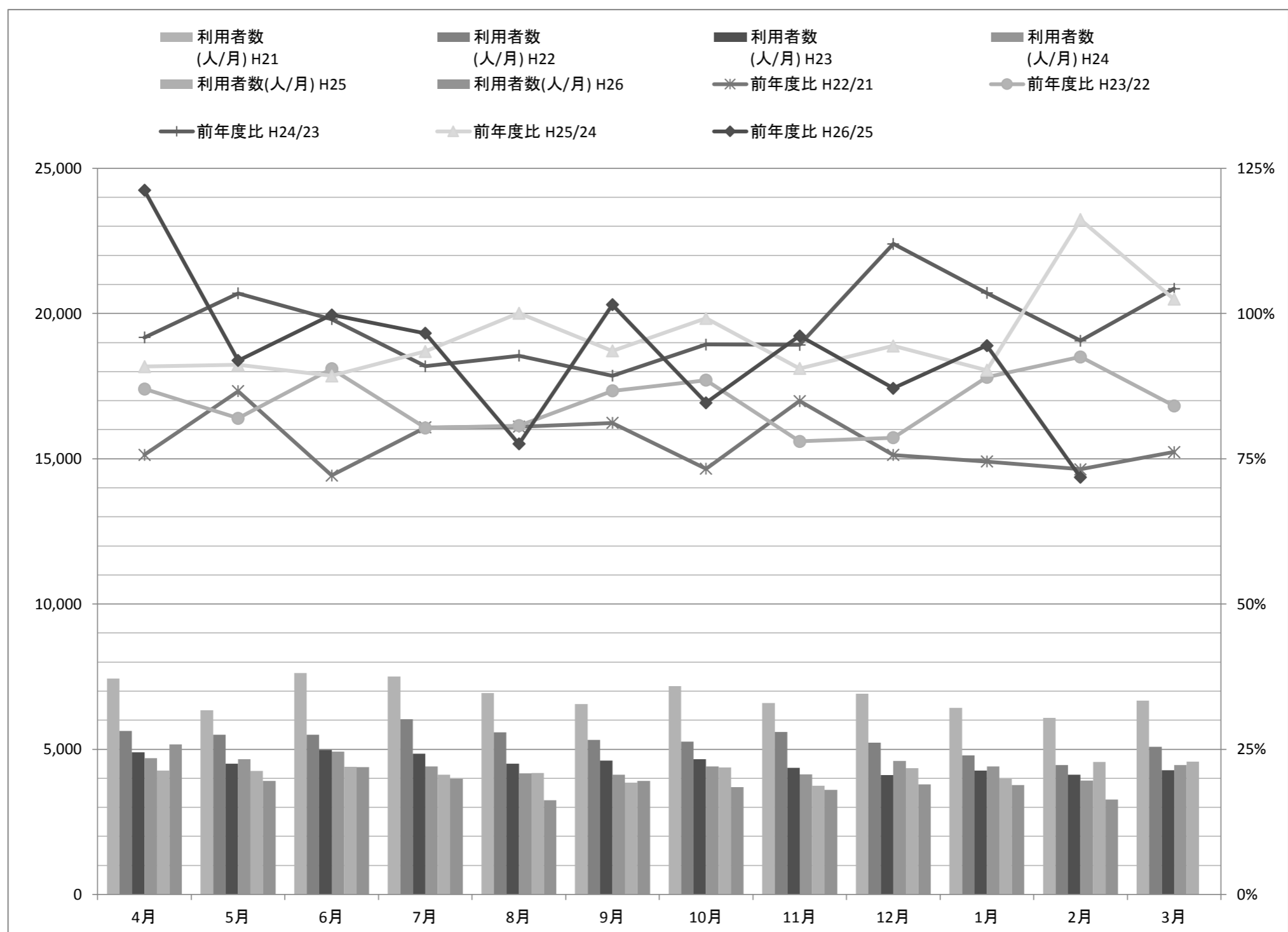
きのつバスホ-1

ホ-1 梅谷高の原線		4月	5月	6月	7月	8月	9月	10月	11月	12月	1月	2月	3月	平均	合計	4-2月比
利用者数 (人/月)	H21	11,231	9,982	11,907	13,106	12,114	10,605	11,637	12,104	12,217	10,932	10,007	11,266	11,426	137,108	125,842
	H22	9,811	8,250	8,854	9,468	9,253	8,333	8,305	8,455	8,897	7,983	7,792	8,800	8,683	104,201	95,401
	H23	8,036	7,781	8,017	8,121	8,688	7,734	8,275	8,263	8,099	7,417	7,591	8,129	8,013	96,151	88,022
	H24	8,248	8,464	8,206	8,331	8,141	7,949	8,928	8,354	8,138	7,860	7,219	8,172	8,168	98,010	89,838
	H25	8,264	7,788	8,464	8,457	8,192	7,544	7,516	6,946	7,419	7,225	7,541	7,026	7,699	92,382	85,356
	H26	6,927	7,961	8,144	8,334	6,560	7,896	7,756	6,737	7,663	7,169	6,861		7,455	82,008	82,008
前年度比	H22/21	87.36%	82.65%	74.36%	72.24%	76.38%	78.58%	71.37%	69.85%	72.82%	73.02%	77.87%	78.11%	-	76.00%	75.81%
	H23/22	81.91%	94.32%	90.55%	85.77%	93.89%	92.81%	99.64%	97.73%	91.03%	92.91%	97.42%	92.38%	-	92.27%	92.27%
	H24/23	102.64%	108.78%	102.36%	102.59%	93.70%	102.78%	107.89%	101.10%	100.48%	105.97%	95.10%	100.53%	-	101.93%	102.06%
	H25/24	100.19%	92.01%	103.14%	101.51%	100.63%	94.91%	84.18%	83.15%	91.16%	91.92%	104.46%	85.98%	-	94.26%	95.01%
	H26/25	83.82%	102.22%	96.22%	98.55%	80.08%	104.67%	103.19%	96.99%	103.29%	99.22%	90.98%		-	-	96.08%
利用者数 (人/日)	H21	374.37	322.00	396.90	422.77	390.77	353.50	375.39	403.47	394.10	352.65	357.39	363.42	-	375.64	376.77
	H22	327.03	266.13	295.13	305.42	298.48	277.77	267.90	281.83	287.00	257.52	278.29	283.87	-	285.48	285.63
	H23	267.87	251.00	267.23	261.97	280.26	257.80	266.94	275.43	261.26	239.26	261.76	262.23	-	262.71	262.75
	H24	274.93	273.03	273.53	268.74	7878.39	264.97	288.00	278.47	262.52	253.55	257.82	263.61	-	292.54	295.49
	H25	275.47	251.23	282.13	272.81	264.26	251.47	242.45	231.53	239.32	233.06	269.32	226.65	-	253.10	255.56
	H26	230.90	256.81	271.47	268.84	211.61	263.20	250.19	224.57	247.19	231.26	245.04		-	-	245.53



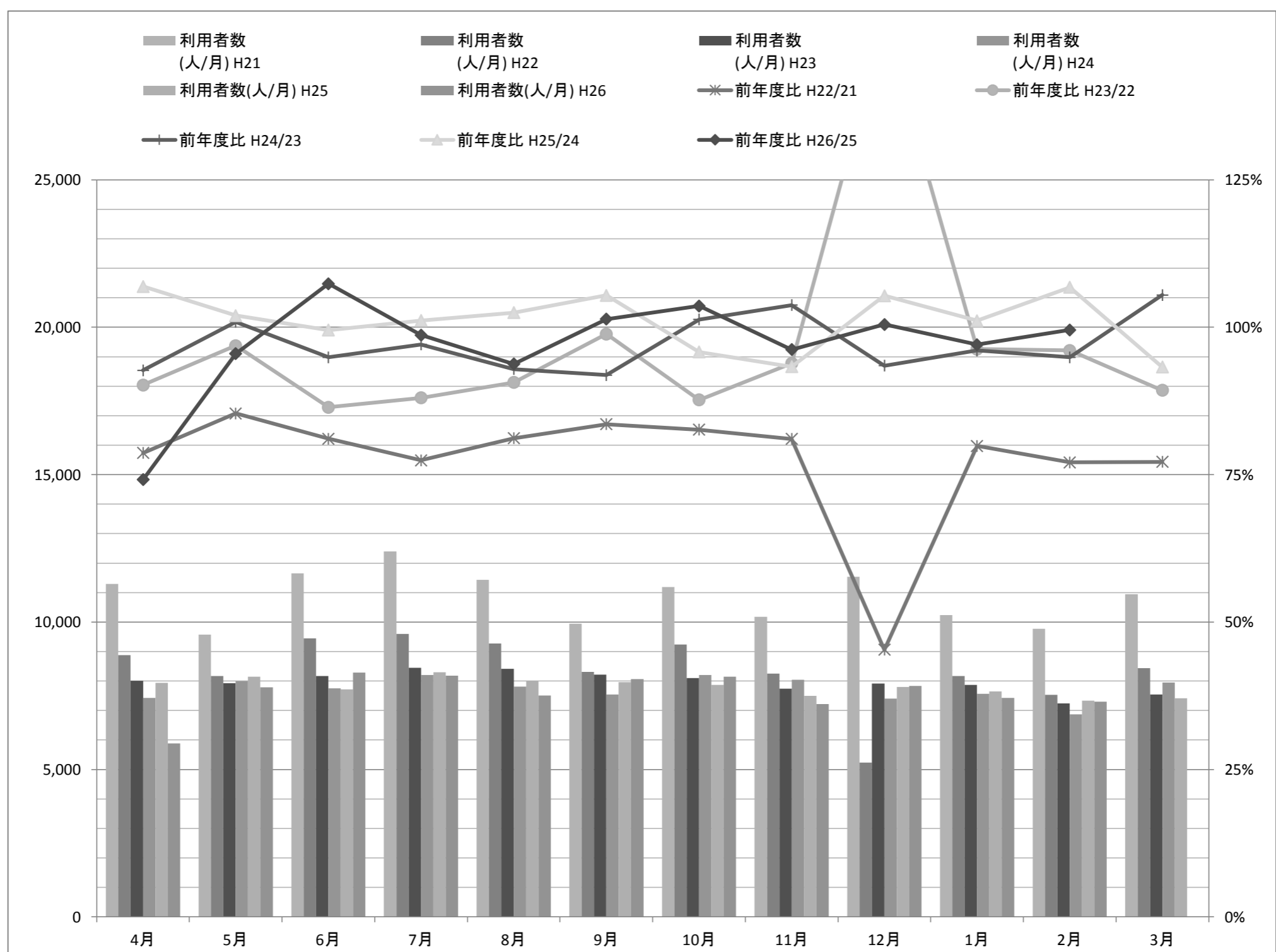
きのつバス木-2

木-2 鹿背山高の原線		4月	5月	6月	7月	8月	9月	10月	11月	12月	1月	2月	3月	平均	合計	4-2月比
利用者数 (人/月)	H21	7,433	6,345	7,617	7,501	6,929	6,556	7,177	6,589	6,912	6,421	6,080	6,676	6,853	82,236	75,560
	H22	5,626	5,496	5,494	6,031	5,578	5,322	5,259	5,596	5,228	4,785	4,450	5,085	5,329	63,950	58,865
	H23	4,896	4,505	4,971	4,843	4,501	4,614	4,656	4,365	4,110	4,260	4,118	4,276	4,510	54,115	49,839
	H24	4,694	4,661	4,923	4,404	4,174	4,120	4,407	4,130	4,602	4,410	3,925	4,459	4,409	52,909	48,450
	H25	4,265	4,249	4,394	4,117	4,176	3,855	4,370	3,739	4,345	3,980	4,559	4,569	4,218	50,618	46,049
	H26	5,169	3,905	4,384	3,977	3,239	3,913	3,699	3,595	3,786	3,761	3,273		3,882	42,701	42,701
前年度比	H22/21	75.69%	86.62%	72.13%	80.40%	80.50%	81.18%	73.28%	84.93%	75.64%	74.52%	73.19%	76.17%	-	77.76%	77.90%
	H23/22	87.02%	81.97%	90.48%	80.30%	80.69%	86.70%	88.53%	78.00%	78.62%	89.03%	92.54%	84.09%	-	84.62%	84.67%
	H24/23	95.87%	103.46%	99.03%	90.94%	92.73%	89.29%	94.65%	94.62%	111.97%	103.52%	95.31%	104.28%	-	97.77%	97.21%
	H25/24	90.86%	91.16%	89.25%	93.48%	100.05%	93.57%	99.16%	90.53%	94.42%	90.25%	116.15%	102.47%	-	95.67%	95.04%
	H26/25	121.20%	91.90%	99.77%	96.60%	77.56%	101.50%	84.65%	96.15%	87.13%	94.50%	71.79%		-	-	92.73%
利用者数 (人/日)	H21	247.77	204.68	253.90	241.97	223.52	218.53	231.52	219.63	222.97	207.13	217.14	215.35	-	225.30	226.23
	H22	187.53	177.29	183.13	194.55	179.94	177.40	169.65	186.53	168.65	154.35	158.93	164.03	-	175.21	176.24
	H23	163.20	145.32	165.70	156.23	145.19	153.80	150.19	145.50	132.58	137.42	142.00	137.94	-	147.86	148.77
	H24	156.47	150.35	164.10	142.06	4039.35	137.33	142.16	137.67	148.45	142.26	140.18	143.84	-	157.92	159.36
	H25	142.17	137.06	146.47	132.81	134.71	128.50	140.97	124.63	140.16	128.39	162.82	147.39	-	138.68	137.87
	H26	172.30	125.97	146.13	128.29	104.48	130.43	119.32	119.83	122.13	121.32	116.89		-	-	127.85



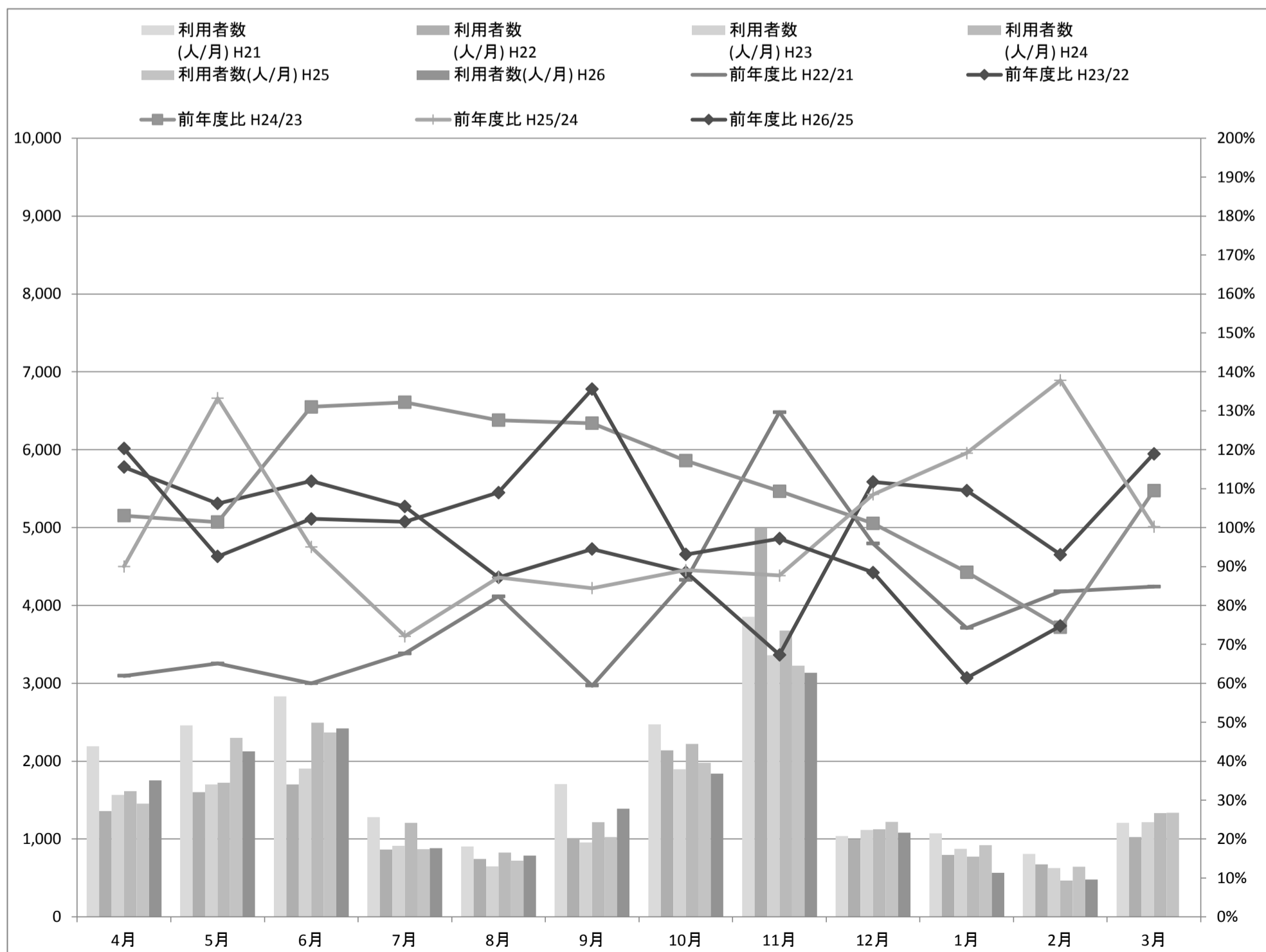
きのつバス木-3

木-3 木津川台高の原線		4月	5月	6月	7月	8月	9月	10月	11月	12月	1月	2月	3月	平均	合計	4-2月比
利用者数 (人/月)	H21	11,291	9,576	11,650	12,396	11,431	9,944	11,185	10,177	11,536	10,234	9,776	10,940	10,845	130,136	119,196
	H22	8,883	8,176	9,447	9,600	9,279	8,310	9,243	8,250	5,228	8,175	7,536	8,443	8,381	100,570	92,127
	H23	8,012	7,921	8,165	8,451	8,409	8,215	8,103	7,746	7,917	7,873	7,240	7,539	7,966	95,591	88,052
	H24	7,426	7,992	7,749	8,203	7,811	7,548	8,210	8,037	7,401	7,563	6,870	7,952	7,730	92,762	84,810
	H25	7,939	8,150	7,712	8,296	8,005	7,957	7,865	7,499	7,797	7,648	7,336	7,416	7,802	93,620	86,204
	H26	5,886	7,784	8,281	8,187	7,507	8,067	8,148	7,215	7,833	7,423	7,303		7,603	83,634	83,634
前年度比	H22/21	78.67%	85.38%	81.09%	77.44%	81.17%	83.57%	82.64%	81.07%	45.32%	79.88%	77.09%	77.18%	-	77.28%	77.29%
	H23/22	90.19%	96.88%	86.43%	88.03%	90.62%	98.86%	87.67%	93.89%	151.43%	96.31%	96.07%	89.29%	-	95.05%	95.58%
	H24/23	92.69%	100.90%	94.91%	97.07%	92.89%	91.88%	101.32%	103.76%	93.48%	96.06%	94.89%	105.48%	-	97.04%	96.32%
	H25/24	106.91%	101.98%	99.52%	101.13%	102.48%	105.42%	95.80%	93.31%	105.35%	101.12%	106.78%	93.26%	-	100.92%	101.64%
	H26/25	74.14%	95.51%	107.38%	98.69%	93.78%	101.38%	103.60%	96.21%	100.46%	97.06%	99.55%		-	-	97.02%
利用者数 (人/日)	H21	376.37	308.90	388.33	399.87	368.74	331.47	360.81	339.23	372.13	330.13	349.14	352.90	-	356.54	356.87
	H22	296.10	263.74	314.90	309.68	299.32	277.00	298.16	275.00	301.68	263.71	269.14	272.35	-	275.53	275.83
	H23	267.07	255.52	272.17	272.61	271.26	273.83	261.39	258.20	255.39	253.97	249.66	243.19	-	261.18	262.84
	H24	247.53	257.81	258.30	264.61	2559.03	251.60	264.84	267.90	238.74	243.97	245.36	256.52	-	276.87	278.95
	H25	264.63	262.90	257.07	267.61	258.23	265.23	253.71	249.97	251.52	246.71	262.00	239.23	-	256.49	258.10
	H26	196.20	251.10	276.03	264.10	242.16	268.90	262.84	240.50	252.68	239.45	260.82		-	-	250.40



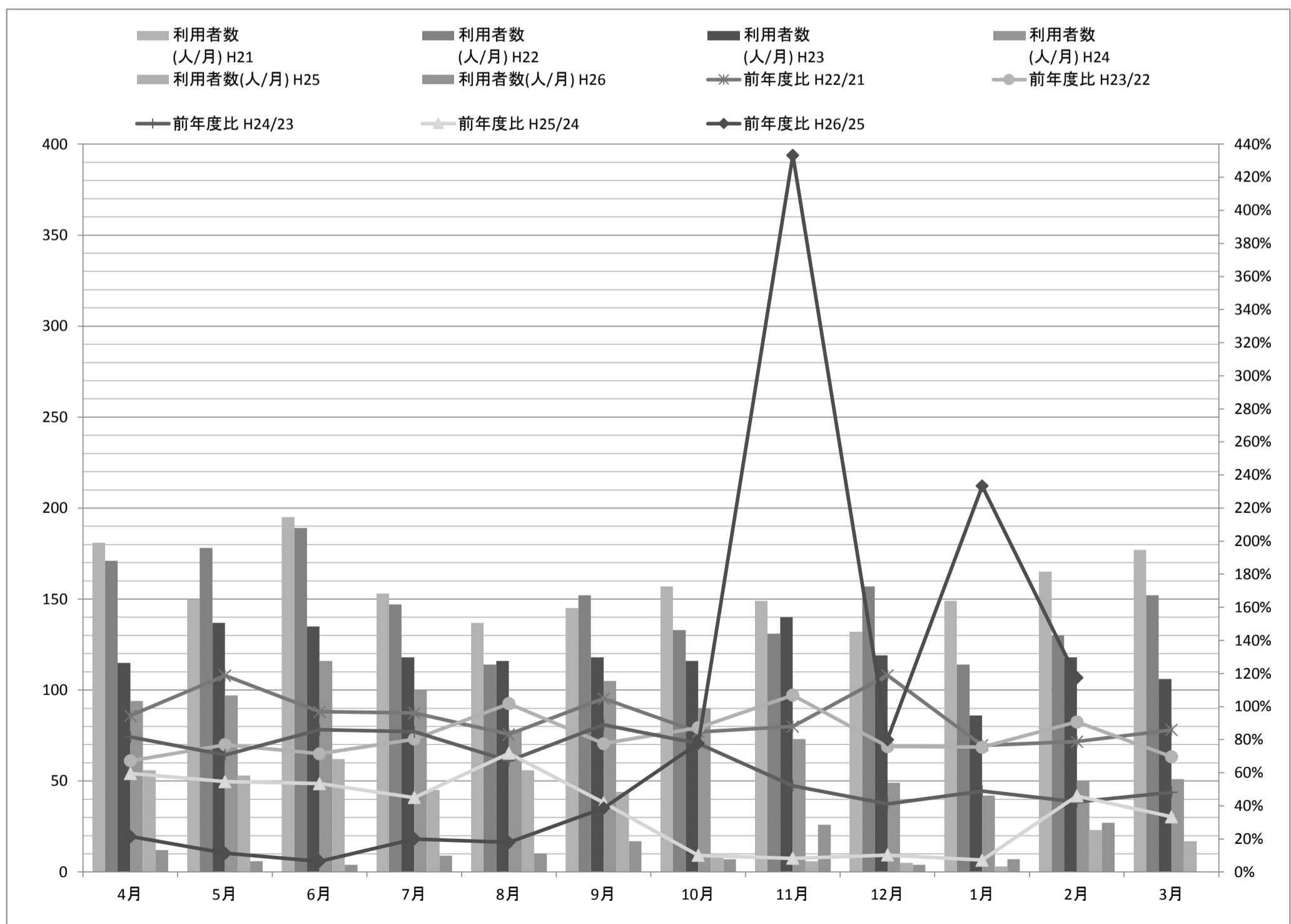
当尾線

当尾線		4月	5月	6月	7月	8月	9月	10月	11月	12月	1月	2月	3月	平均	合計	4-12月比
利用者数 (人/月)	H21	2,193	2,462	2,834	1,281	904	1,707	2,473	3,854	1,041	1,075	809	1,207	1,820.0	21,840	20,633
	H22	1,358	1,602	1,701	867	744	1,014	2,140	4,995	998	798	676	1,024	1,493.1	17,917	16,893
	H23	1,569	1,701	1,904	914	649	958	1,895	3,363	1,115	874	629	1,218	1,399.1	16,789	15,571
	H24	1,617	1,725	2,494	1,208	828	1,215	2,221	3,677	1,127	774	468	1,334	1,557.3	18,688	17,354
	H25	1,456	2,298	2,369	871	722	1,026	1,978	3,225	1,223	922	645	1,337	1,506.0	18,072	16,735
	H26	1,752	2,128	2,422	884	787	1,391	1,842	3,134	1,082	566	482		1,497.3	16,470	16,470
前年度比	H22/21	61.92%	65.07%	60.02%	67.68%	82.30%	59.40%	86.53%	129.61%	95.87%	74.23%	83.56%	84.84%	-	82.04%	81.87%
	H23/22	115.54%	106.18%	111.93%	105.42%	87.23%	94.48%	88.55%	67.33%	111.72%	109.52%	93.05%	118.95%	-	93.70%	92.17%
	H24/23	103.06%	101.41%	130.99%	132.17%	127.58%	126.83%	117.20%	109.34%	101.08%	88.56%	74.40%	109.52%	-	111.31%	111.45%
	H25/24	90.04%	133.22%	94.99%	72.10%	87.20%	84.44%	89.06%	87.70%	108.52%	119.12%	137.82%	100.22%	-	96.70%	96.43%
	H26/25	120.33%	92.60%	102.24%	101.49%	109.00%	135.58%	93.12%	97.19%	88.47%	61.39%	74.73%		-	-	98.42%
利用者数 (人/日)	H21	73.10	79.42	94.47	41.32	29.16	56.90	79.77	128.47	33.58	34.68	28.89	38.94	-	59.84	61.78
	H22	45.27	51.68	56.70	27.97	24.00	33.80	69.03	166.50	32.19	25.74	24.14	33.03	-	49.09	50.58
	H23	52.30	54.87	63.47	29.48	20.94	31.93	61.13	112.10	35.97	28.19	21.69	39.29	-	45.87	46.48
	H24	53.90	55.65	83.13	38.97	26.71	40.50	71.65	122.57	36.35	24.97	16.71	43.03	-	51.20	51.96
	H25	48.53	74.13	78.97	28.10	23.29	34.20	63.81	107.49	39.45	29.74	23.04	2.54	-	49.51	50.10
	H26	58.40	68.65	80.73	28.52	25.39	46.37	59.42	104.47	34.90	18.26	17.21		-	-	49.31



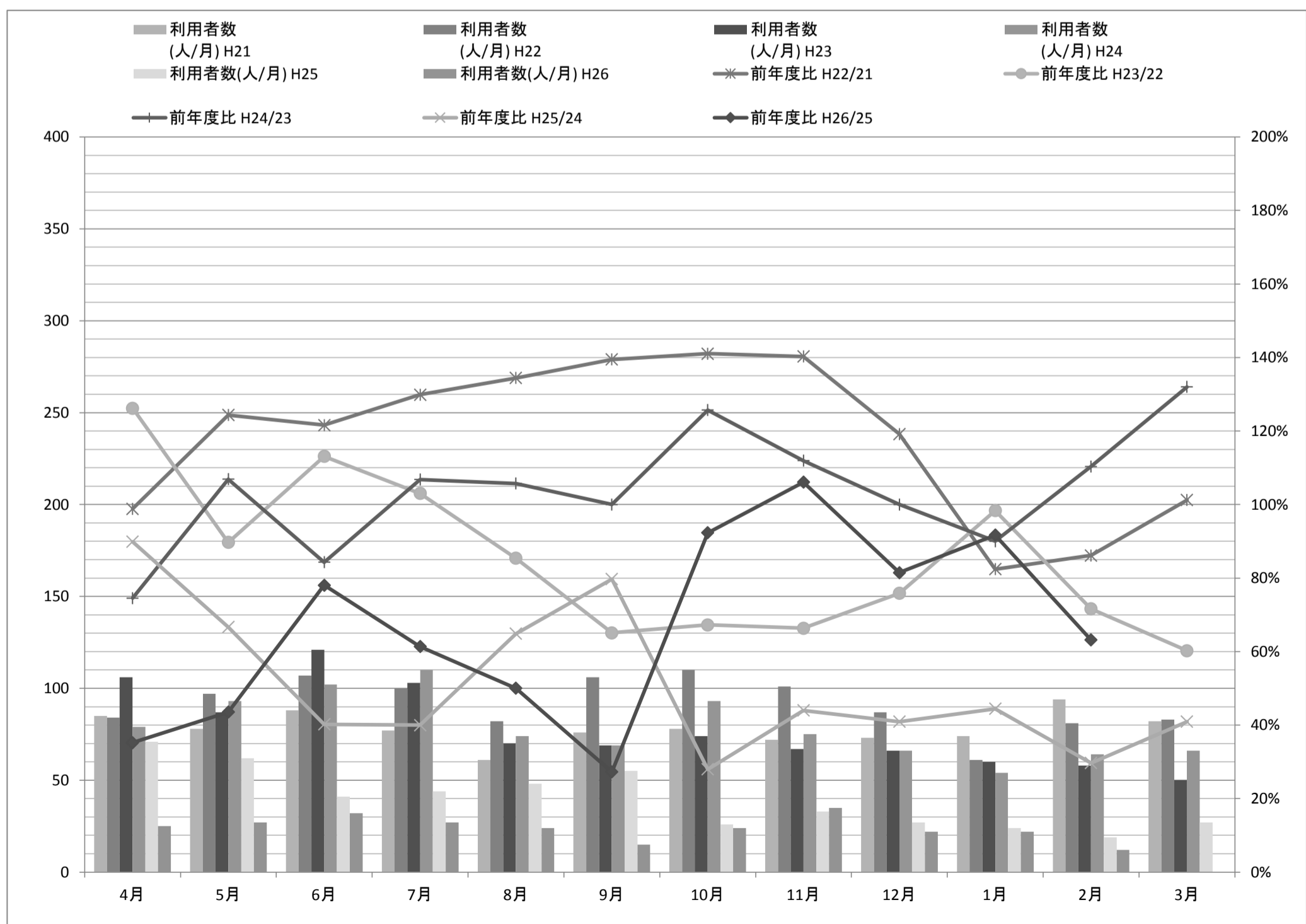
山田線

山田線		4月	5月	6月	7月	8月	9月	10月	11月	12月	1月	2月	3月	平均	合計	4-2月比
利用者数 (人/月)	H21	181	150	195	153	137	145	157	149	132	149	165	177	157.50	1,890	1,713
	H22	171	178	189	147	114	152	133	131	157	114	130	152	147.33	1,768	1,616
	H23	115	137	135	118	116	118	116	140	119	86	118	106	118.67	1,424	1,318
	H24	94	97	116	100	78	105	90	73	49	42	50	51	78.75	945	894
	H25	56	53	62	45	56	44	9	6	5	3	23	17	31.58	379	362
	H26	12	6	4	9	10	17	7	26	4	7	27		11.73	129	129
前年度比	H22/21	94.48%	118.67%	96.92%	96.08%	83.21%	104.83%	84.71%	87.92%	118.94%	76.51%	78.79%	85.88%	-	93.54%	94.34%
	H23/22	67.25%	76.97%	71.43%	80.27%	101.75%	77.63%	87.22%	106.87%	75.80%	75.44%	90.77%	69.74%	-	80.54%	81.56%
	H24/23	81.74%	70.80%	85.93%	84.75%	67.24%	88.98%	77.59%	52.14%	41.18%	48.84%	42.37%	48.11%	-	66.36%	67.83%
	H25/24	59.57%	54.64%	53.45%	45.00%	71.79%	41.90%	10.00%	8.22%	10.20%	7.14%	46.00%	33.33%	-	40.11%	40.49%
	H26/25	21.43%	11.32%	6.45%	20.00%	17.86%	38.64%	77.78%	433.33%	80.00%	233.33%	117.39%		-	-	35.64%
利用者数 (人/日)	H21	8.62	8.33	8.86	6.95	6.52	7.63	7.48	7.84	6.95	7.84	8.68	8.05	-	7.81	7.79
	H22	8.14	9.89	8.59	7.00	5.18	7.60	6.65	6.55	8.26	6.00	6.84	6.91	-	7.28	7.31
	H23	5.75	7.21	6.14	5.90	5.04	5.90	5.80	7.00	6.26	4.53	5.62	5.05	-	5.84	5.91
	H24	4.70	4.62	5.52	4.76	3.39	5.53	4.09	3.48	2.58	2.21	2.63	2.55	-	4.24	4.40
	H25	2.67	2.52	3.10	2.05	2.55	2.32	1.13	1.20	1.00	1.00	1.64	1.55	-	2.22	2.26
	H26	1.50	1.50	1.00	1.50	1.43	1.89	1.00	1.86	1.33	1.40	1.80		-	-	1.57



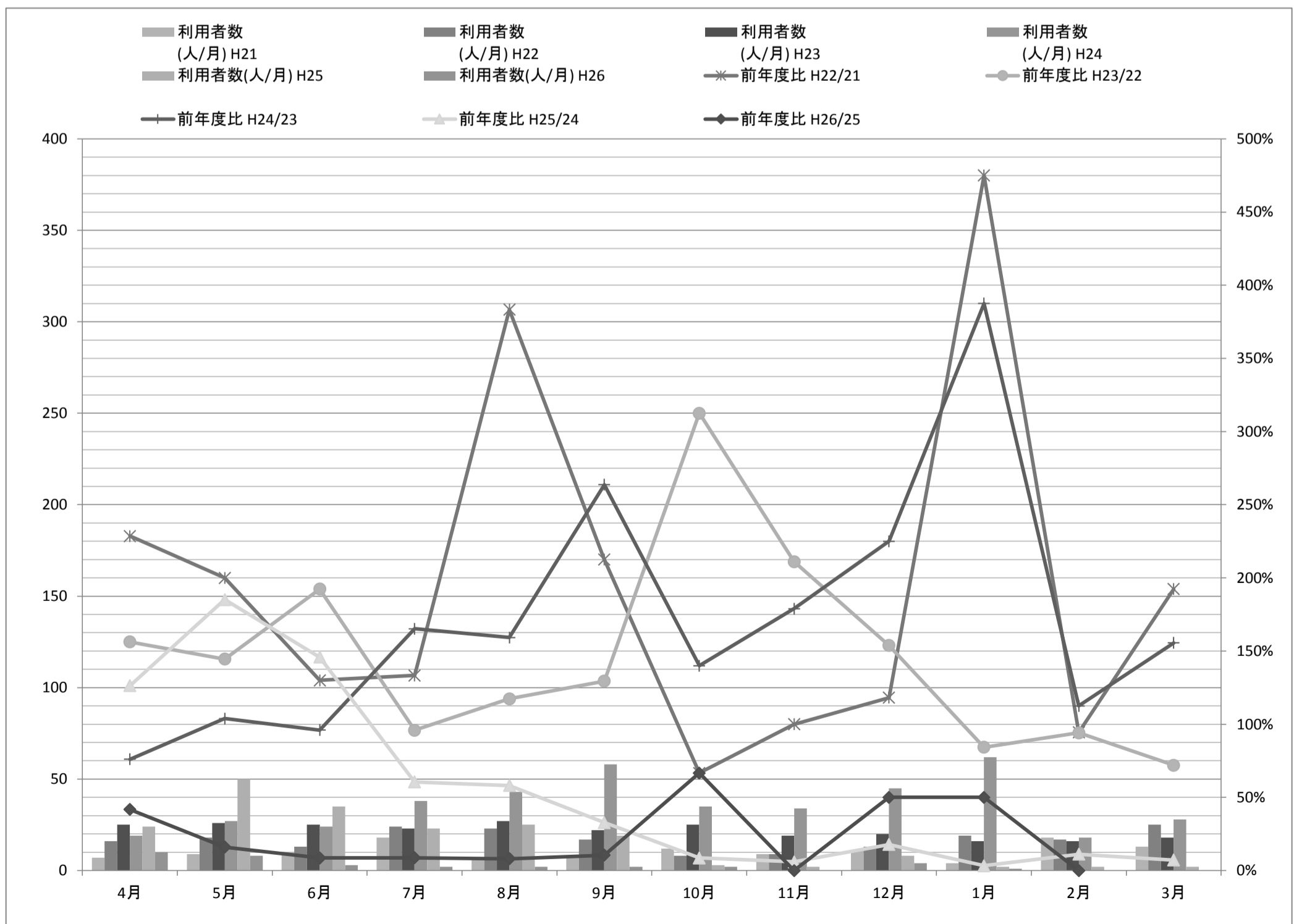
大畑線

大畑線		4月	5月	6月	7月	8月	9月	10月	11月	12月	1月	2月	3月	平均	合計	4-2月比
利用者数 (人/月)	H21	85	78	88	77	61	76	78	72	73	74	94	82	78.17	938	856
	H22	84	97	107	100	82	106	110	101	87	61	81	83	91.58	1,099	1,016
	H23	106	87	121	103	70	69	74	67	66	60	58	50	77.58	931	881
	H24	79	93	102	110	74	69	93	75	66	54	64	66	78.75	945	879
	H25	71	62	41	44	48	55	26	33	27	24	19	27	39.75	477	450
	H26	25	27	32	27	24	15	24	35	22	22	12		24.09	265	265
前年度比	H22/21	98.82%	124.36%	121.59%	129.87%	134.43%	139.47%	141.03%	140.28%	119.18%	82.43%	86.17%	101.22%	-	117.16%	118.69%
	H23/22	126.19%	89.69%	113.08%	103.00%	85.37%	65.09%	67.27%	66.34%	75.86%	98.36%	71.60%	60.24%	-	84.71%	86.71%
	H24/23	74.53%	106.90%	84.30%	106.80%	105.71%	100.00%	125.68%	111.94%	100.00%	90.00%	110.34%	132.00%	-	101.50%	99.77%
	H25/24	89.87%	66.67%	40.20%	40.00%	64.86%	79.71%	27.96%	44.00%	40.91%	44.44%	29.69%	40.91%	-	50.48%	51.19%
	H26/25	35.21%	43.55%	78.05%	61.36%	50.00%	27.27%	92.31%	106.06%	81.48%	91.67%	63.16%		-	-	58.89%
利用者数 (人/日)	H21	4.05	4.33	4.00	3.50	2.90	4.00	3.71	3.79	3.84	3.89	4.95	3.73	-	3.88	3.89
	H22	4.00	5.39	4.86	4.76	3.73	5.30	5.50	5.05	4.58	3.21	4.26	3.77	-	4.52	4.60
	H23	5.30	4.58	5.50	5.15	3.04	3.45	3.70	3.35	3.47	3.16	2.76	2.38	-	3.82	3.95
	H24	3.95	4.43	4.86	5.24	3.22	3.63	4.23	3.57	3.47	2.84	3.37	3.30	-	4.24	4.33
	H25	3.38	2.95	2.05	2.00	2.18	2.89	2.17	2.54	1.80	2.18	1.73	1.93	-	2.37	2.41
	H26	2.50	2.45	3.20	1.93	1.85	2.14	2.40	2.92	2.00	1.69	1.50		-	-	2.23



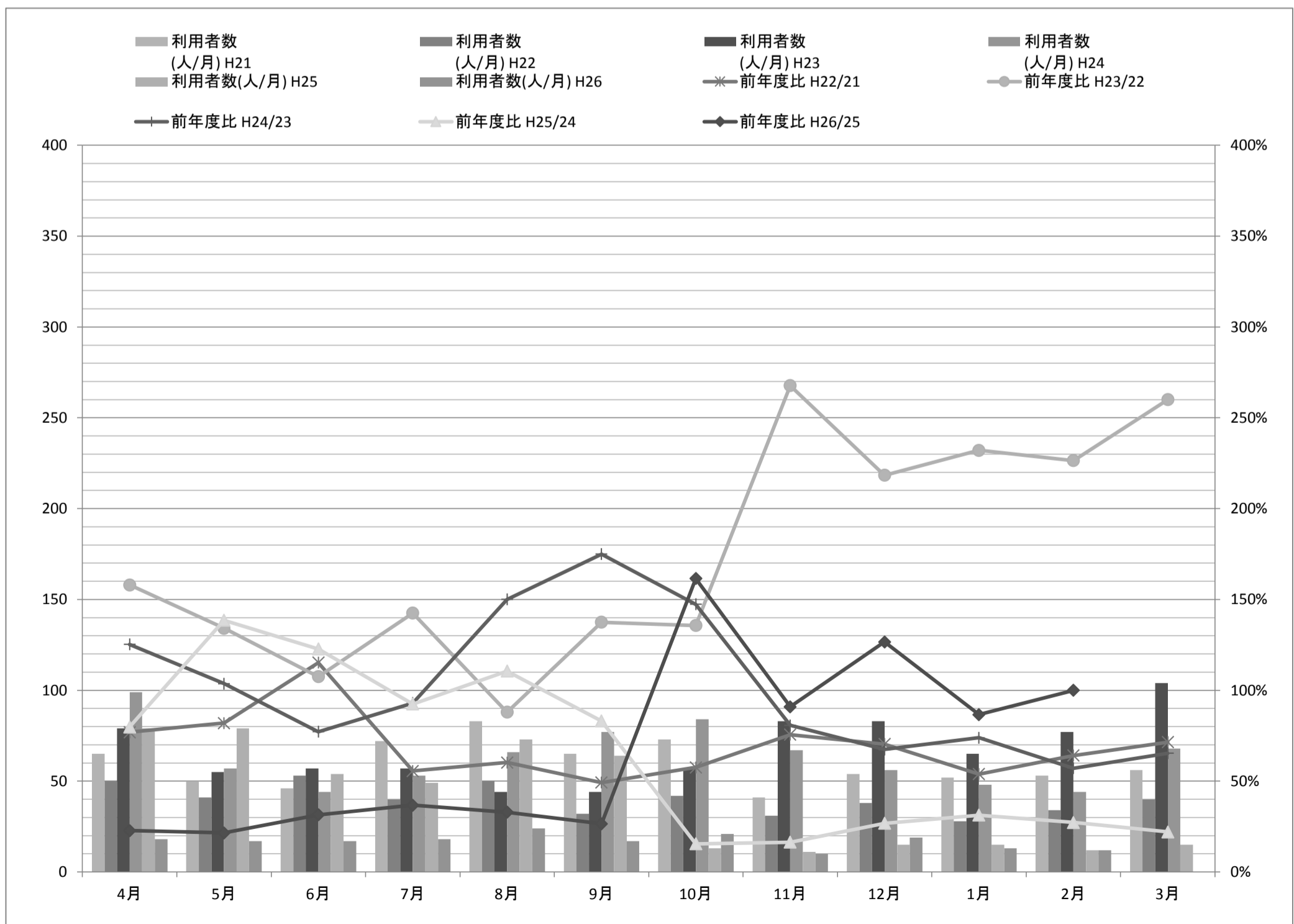
観音寺線

観音寺線		4月	5月	6月	7月	8月	9月	10月	11月	12月	1月	2月	3月	平均	合計	4-2月比
利用者数 (人/月)	H21	7	9	10	18	6	8	12	9	11	4	18	13	10.42	125	112
	H22	16	18	13	24	23	17	8	9	13	19	17	25	16.83	202	177
	H23	25	26	25	23	27	22	25	19	20	16	16	18	21.83	262	244
	H24	19	27	24	38	43	58	35	34	45	62	18	28	35.92	431	403
	H25	24	50	35	23	25	19	3	2	8	2	2	2	16.25	195	193
	H26	10	8	3	2	2	2	2	2	0	4	1	0	3.09	34	34
前年度比	H22/21	228.57%	200.00%	130.00%	133.33%	383.33%	212.50%	66.67%	100.00%	118.18%	475.00%	94.44%	192.31%	-	161.60%	158.04%
	H23/22	156.25%	144.44%	192.31%	95.83%	117.39%	129.41%	312.50%	211.11%	153.85%	84.21%	94.12%	72.00%	-	129.70%	137.85%
	H24/23	76.00%	103.85%	96.00%	165.22%	159.26%	263.64%	140.00%	178.95%	225.00%	387.50%	112.50%	155.56%	-	164.50%	165.16%
	H25/24	126.32%	185.19%	145.83%	60.53%	58.14%	32.76%	8.57%	5.88%	17.78%	3.23%	11.11%	7.14%	-	45.24%	47.89%
	H26/25	41.67%	16.00%	8.57%	8.70%	8.00%	10.53%	66.67%	0.00%	50.00%	50.00%	0.00%	-	-	-	17.62%
利用者数 (人/日)	H21	0.33	0.50	0.45	0.82	0.29	0.42	0.57	0.47	0.58	0.21	0.95	0.59	-	0.52	0.51
	H22	0.76	1.00	0.59	1.14	1.05	0.85	0.40	0.45	0.68	1.00	0.89	1.14	-	0.83	0.80
	H23	1.25	1.37	1.14	1.15	1.17	1.10	1.25	0.95	1.05	0.84	0.76	0.86	-	1.07	1.09
	H24	0.95	1.29	1.14	1.81	1.87	3.05	1.59	1.62	2.37	3.26	0.95	1.40	-	1.93	1.99
	H25	1.14	2.38	1.75	1.05	1.14	1.00	1.00	1.00	1.33	1.00	1.00	1.00	-	1.37	1.38
	H26	3.33	1.33	1.50	1.00	1.00	2.00	1.00	0.00	1.33	1.00	0.00	-	-	-	1.55



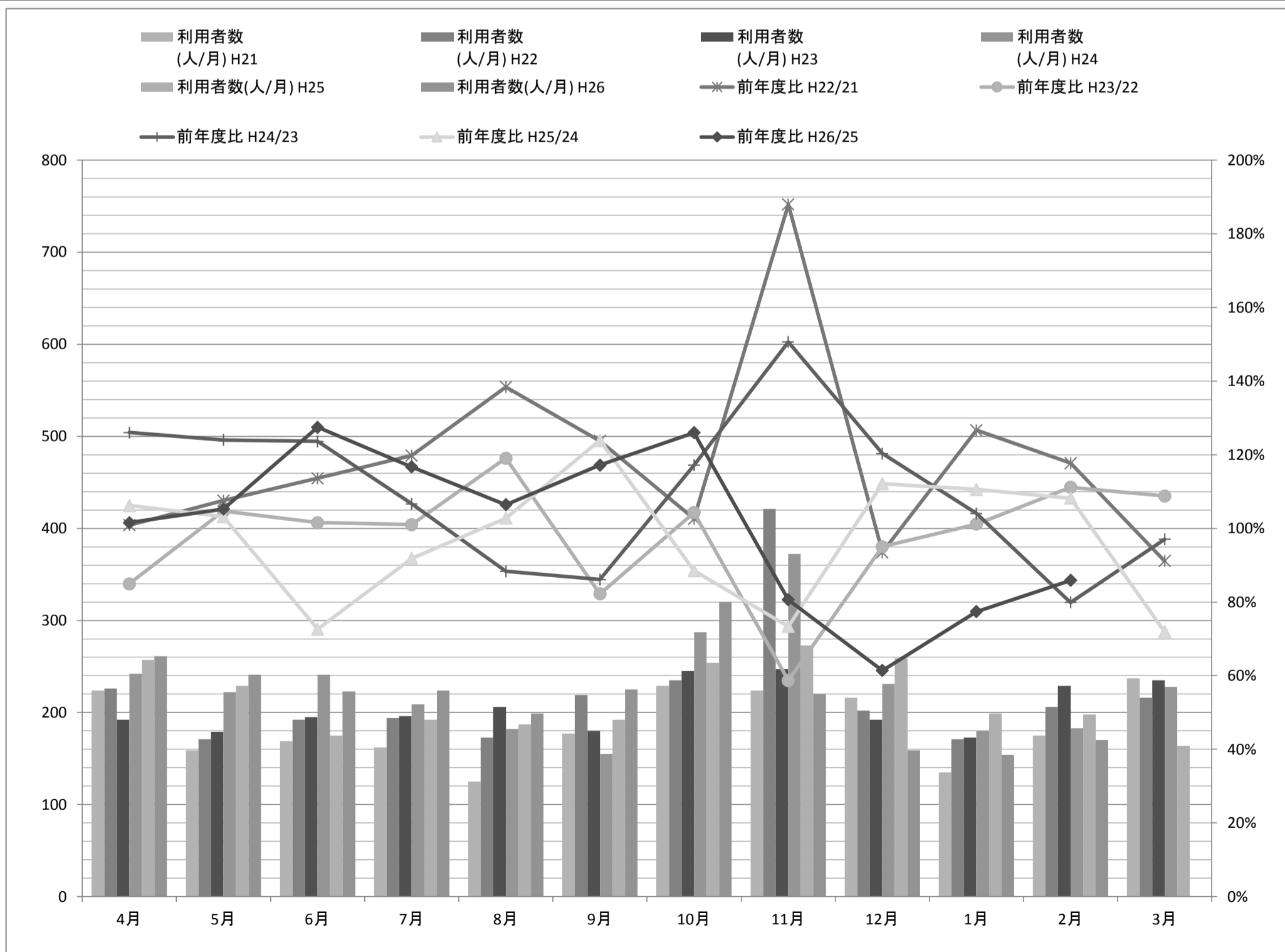
南加茂台線

南加茂台線		4月	5月	6月	7月	8月	9月	10月	11月	12月	1月	2月	3月	平均	合計	4-2月比
利用者数 (人/月)	H21	65	50	46	72	83	65	73	41	54	52	53	56	59.17	710	654
	H22	50	41	53	40	50	32	42	31	38	28	34	40	39.92	479	439
	H23	79	55	57	57	44	44	57	83	83	65	77	104	67.08	805	701
	H24	99	57	44	53	66	77	84	67	56	48	44	68	63.58	763	695
	H25	79	79	54	49	73	64	13	11	15	15	12	15	39.92	479	464
	H26	18	17	17	18	24	17	21	10	19	13	12		16.91	186	186
前年度比	H22/21	76.92%	82.00%	115.22%	55.56%	60.24%	49.23%	57.53%	75.61%	70.37%	53.85%	64.15%	71.43%	-	67.46%	67.13%
	H23/22	158.00%	134.15%	107.55%	142.50%	88.00%	137.50%	135.71%	267.74%	218.42%	232.14%	226.47%	260.00%	-	168.06%	159.68%
	H24/23	125.32%	103.64%	77.19%	92.98%	150.00%	175.00%	147.37%	80.72%	67.47%	73.85%	57.14%	65.38%	-	94.78%	99.14%
	H25/24	79.80%	138.60%	122.73%	92.45%	110.61%	83.12%	15.48%	16.42%	26.79%	31.25%	27.27%	22.06%	-	62.78%	66.76%
	H26/25	22.78%	21.52%	31.48%	36.73%	32.88%	26.56%	161.54%	90.91%	126.67%	86.67%	100.00%		-	-	40.09%
利用者数 (人/日)	H21	3.10	2.78	2.09	3.27	3.95	3.42	3.48	2.16	2.84	2.74	2.79	2.55	-	2.93	2.97
	H22	2.38	2.28	2.41	1.90	2.27	1.60	2.10	1.55	2.00	1.47	1.79	1.82	-	1.97	1.99
	H23	3.95	2.89	2.59	2.85	1.91	2.20	2.85	4.15	4.37	3.42	3.67	4.95	-	3.30	3.14
	H24	4.95	2.71	2.10	2.52	2.87	4.05	3.82	3.19	2.95	2.53	2.32	3.40	-	3.42	3.42
	H25	3.76	3.76	2.70	2.23	3.32	3.37	1.63	1.57	1.88	1.67	1.20	1.36	-	2.69	2.78
	H26	1.80	1.31	1.42	1.29	1.71	1.55	1.62	1.25	1.58	1.18	1.50		-	-	1.48



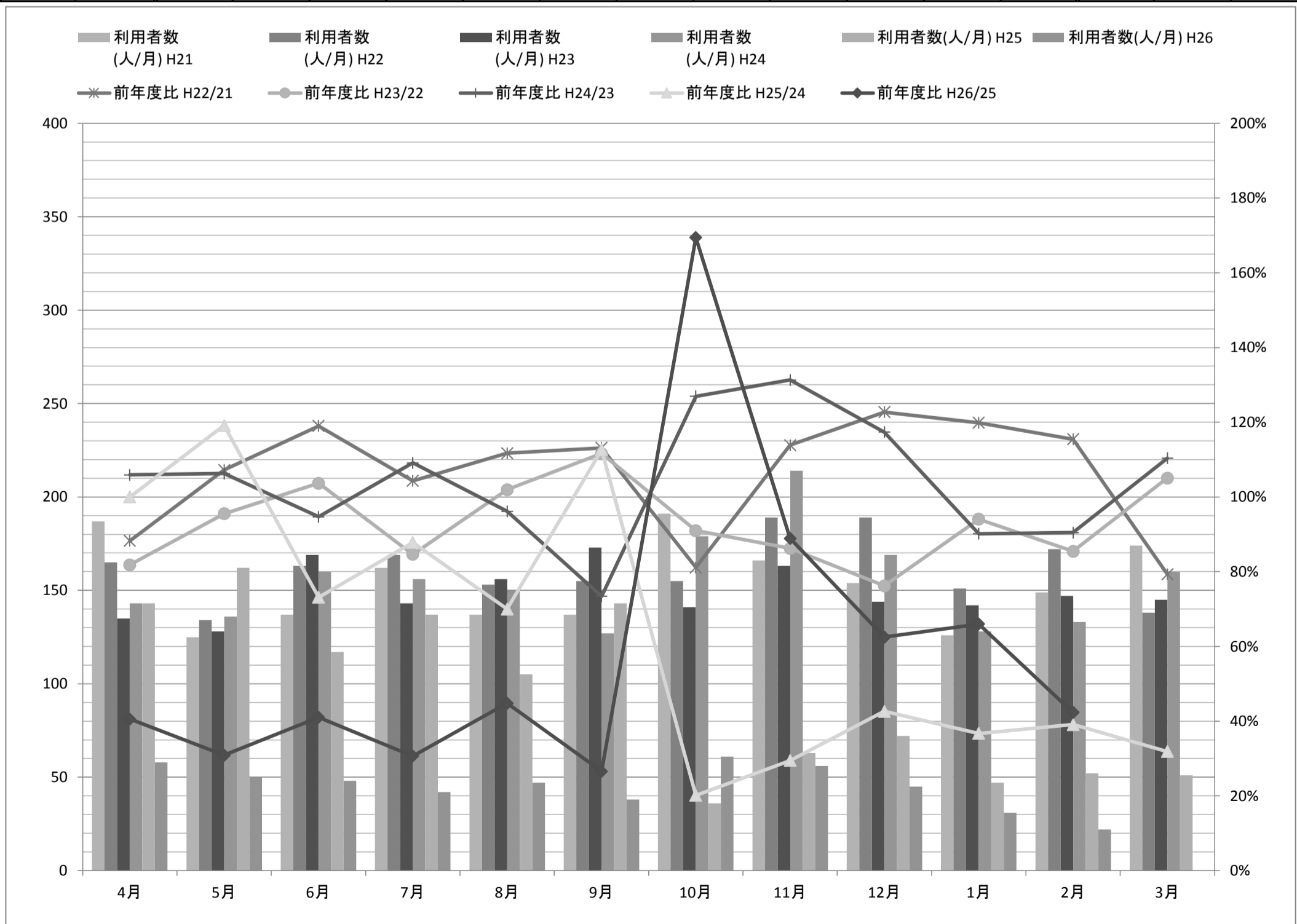
奥畑線

奥畑線		4月	5月	6月	7月	8月	9月	10月	11月	12月	1月	2月	3月	平均	合計	4-2月比
利用者数 (人/月)	H21	224	159	169	162	125	177	229	224	216	135	175	237	186.00	2,232	1,995
	H22	226	171	192	194	173	219	235	421	202	171	206	216	218.83	2,626	2,410
	H23	192	179	195	196	206	180	245	247	192	173	229	235	205.75	2,469	2,234
	H24	242	222	241	209	182	155	287	372	231	180	183	228	227.67	2,732	2,504
	H25	257	229	175	192	187	192	254	273	259	199	198	164	214.92	2,579	2,415
	H26	261	241	223	224	199	225	320	220	159	154	170		217.82	2,396	2,396
前年度比	H22/21	100.89%	107.55%	113.61%	119.75%	138.40%	123.73%	102.62%	187.95%	93.52%	126.67%	117.71%	91.14%	-	117.65%	120.80%
	H23/22	84.96%	104.68%	101.56%	101.03%	119.08%	82.19%	104.26%	58.67%	95.05%	101.17%	111.17%	108.80%	-	94.02%	92.70%
	H24/23	126.04%	124.02%	123.59%	106.63%	88.35%	86.11%	117.14%	150.61%	120.31%	104.05%	79.91%	97.02%	-	110.65%	112.09%
	H25/24	106.20%	103.15%	72.61%	91.87%	102.75%	123.87%	88.50%	73.39%	112.12%	110.56%	108.20%	71.93%	-	94.40%	96.45%
	H26/25	101.56%	105.24%	127.43%	116.67%	106.42%	117.19%	125.98%	80.59%	61.39%	77.39%	85.86%		-	-	99.21%
利用者数 (人/日)	H21	10.67	8.83	7.68	7.36	5.95	9.32	10.90	11.79	11.37	7.11	9.21	10.77	-	9.22	9.07
	H22	10.76	9.50	8.73	9.24	7.86	10.95	11.75	21.05	10.63	9.00	10.84	9.82	-	10.81	10.90
	H23	9.60	9.42	8.86	9.80	8.96	9.00	12.25	12.35	10.11	9.11	10.90	11.19	-	10.12	10.02
	H24	12.10	10.57	11.48	9.95	7.91	8.16	13.05	17.71	12.16	9.47	9.63	11.40	-	12.25	12.33
	H25	12.24	10.90	8.75	8.73	8.50	10.11	11.55	13.65	13.63	10.47	10.42	8.20	-	10.57	10.78
	H26	12.43	12.05	10.62	10.18	9.48	11.25	14.55	12.22	8.37	8.11	8.95		-	-	10.79



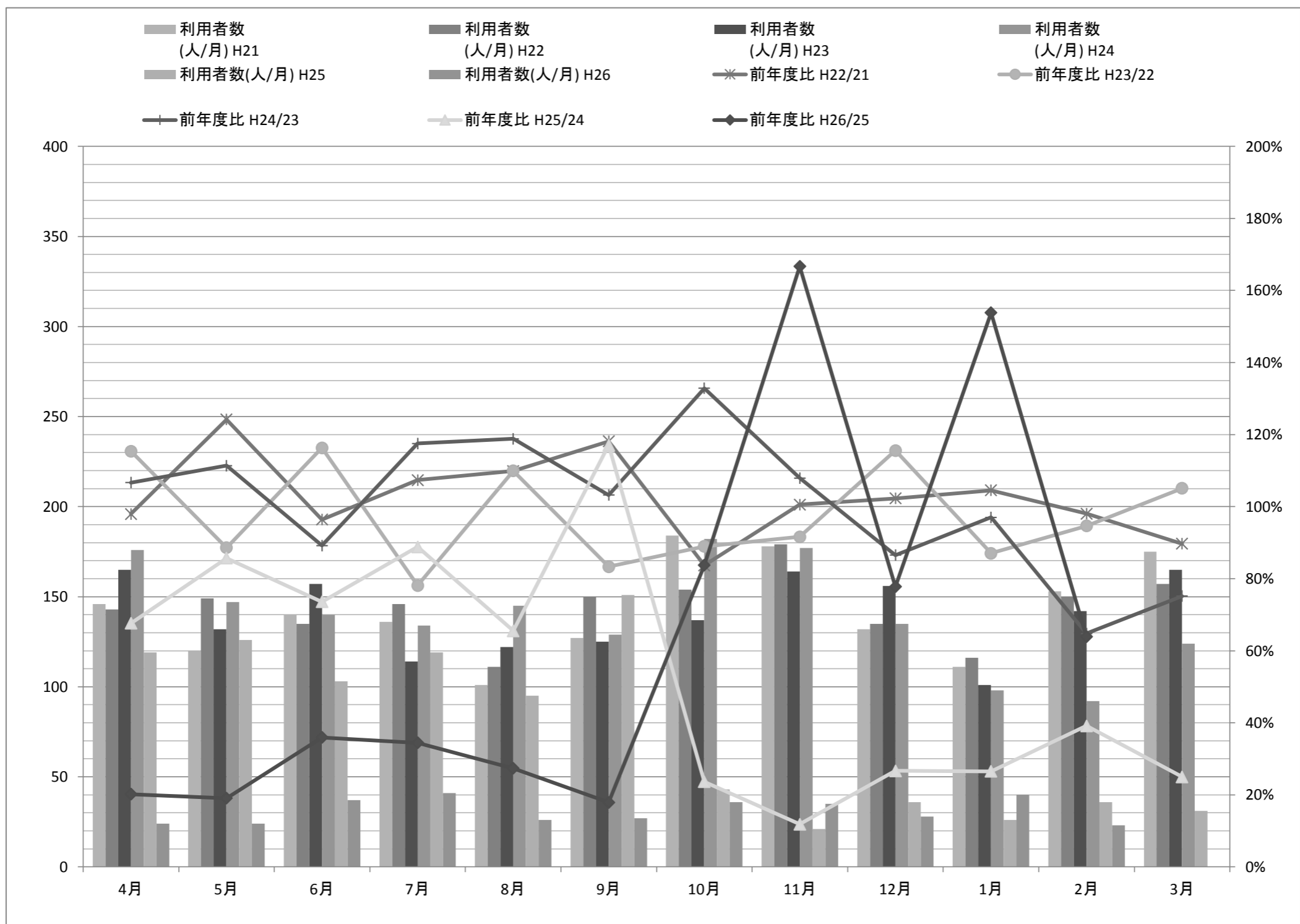
錢司線

錢司線		4月	5月	6月	7月	8月	9月	10月	11月	12月	1月	2月	3月	平均	合計	4-2月比
利用者数 (人/月)	H21	187	125	137	162	137	137	191	166	154	126	149	174	153.75	1,845	1,671
	H22	165	134	163	169	153	155	155	189	189	151	172	138	161.08	1,933	1,795
	H23	135	128	169	143	156	173	141	163	144	142	147	145	148.83	1,786	1,641
	H24	143	136	160	156	150	127	179	214	169	128	133	160	154.58	1,855	1,695
	H25	143	162	117	137	105	143	36	63	72	47	52	51	94.00	1,128	1,077
	H26	58	50	48	42	47	38	61	56	45	31	22		45.27	498	498
前年度比	H22/21	88.24%	107.20%	118.98%	104.32%	111.68%	113.14%	81.15%	113.86%	122.73%	119.84%	115.44%	79.31%	-	104.77%	107.42%
	H23/22	81.82%	95.52%	103.68%	84.62%	101.96%	111.61%	90.97%	86.24%	76.19%	94.04%	85.47%	105.07%	-	92.40%	91.42%
	H24/23	105.93%	106.25%	94.67%	109.09%	96.15%	73.41%	126.95%	131.29%	117.36%	90.14%	90.48%	110.34%	-	103.86%	103.29%
	H25/24	100.00%	119.12%	73.13%	87.82%	70.00%	112.60%	20.11%	29.44%	42.60%	36.72%	39.10%	31.88%	-	60.81%	63.54%
	H26/25	40.56%	30.86%	41.03%	30.66%	44.76%	26.57%	169.44%	88.89%	62.50%	65.96%	42.31%		-	-	46.24%
利用者数 (人/日)	H21	8.90	6.94	6.23	7.36	6.52	7.21	9.10	8.74	8.11	6.63	7.84	7.91	-	7.62	7.60
	H22	7.86	7.44	7.41	8.05	6.95	7.75	7.75	9.45	9.95	7.95	9.05	6.27	-	7.95	8.12
	H23	6.75	6.74	7.68	7.15	6.78	8.65	7.05	8.15	7.58	7.47	7.00	6.90	-	7.32	7.36
	H24	7.15	6.48	7.62	7.43	6.52	6.68	8.14	10.19	8.89	6.74	7.00	8.00	-	8.32	8.35
	H25	6.81	7.71	5.85	6.23	4.77	7.53	2.77	3.15	4.00	2.76	3.06	3.00	-	4.97	5.13
	H26	3.22	2.94	3.00	2.33	2.76	2.53	3.39	3.29	3.46	2.58	2.44		-	-	2.93



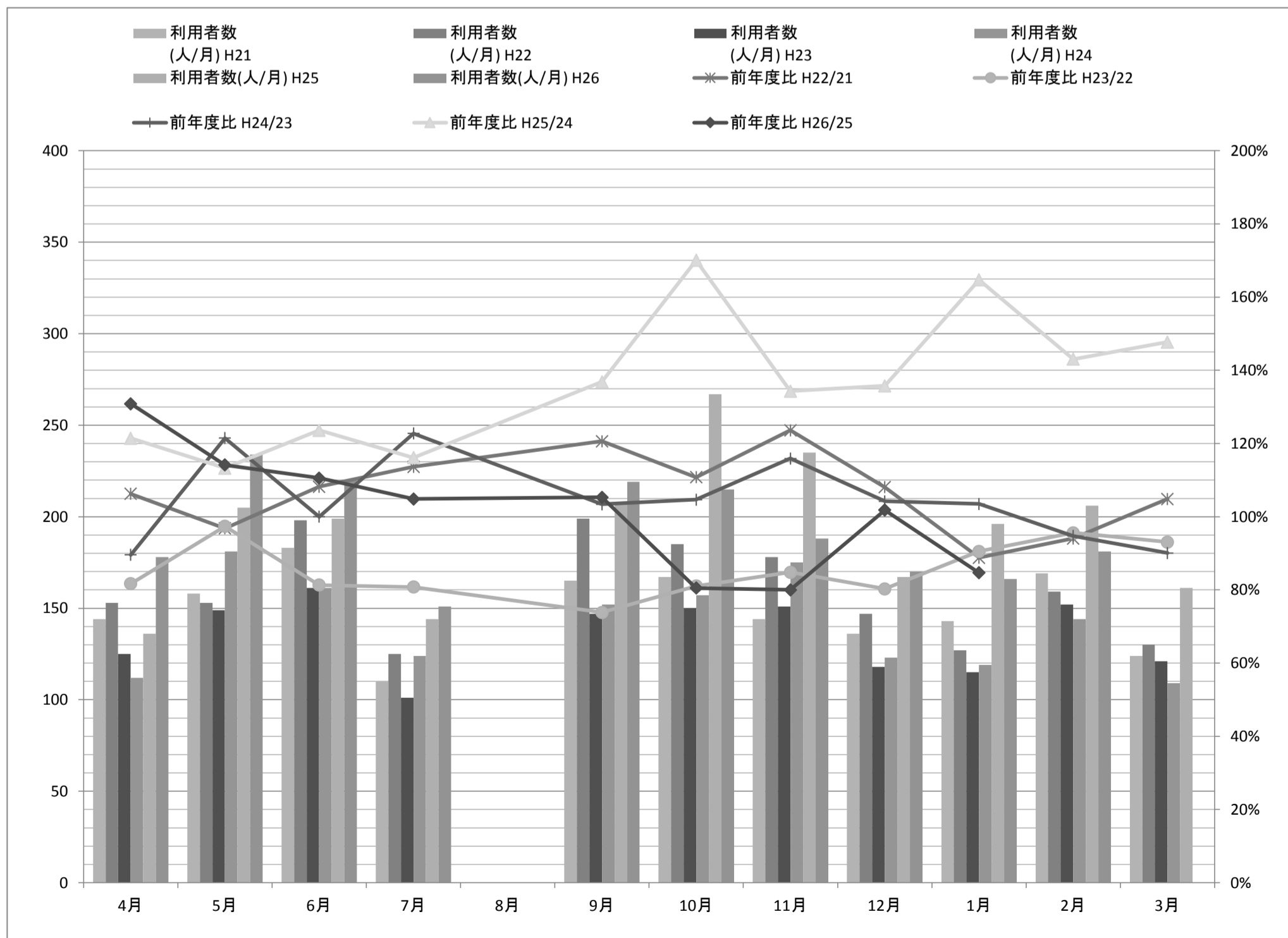
西線

西線		4月	5月	6月	7月	8月	9月	10月	11月	12月	1月	2月	3月	平均	合計	4-2月比
利用者数 (人/月)	H21	146	120	140	136	101	127	184	178	132	111	153	175	141.92	1,703	1,528
	H22	143	149	135	146	111	150	154	179	135	116	150	157	143.75	1,725	1,568
	H23	165	132	157	114	122	125	137	164	156	101	142	165	140.00	1,680	1,515
	H24	176	147	140	134	145	129	182	177	135	98	92	124	139.92	1,679	1,555
	H25	119	126	103	119	95	151	43	21	36	26	36	31	75.50	906	875
	H26	24	24	37	41	26	27	36	35	28	40	23		31.00	341	341
前年度比	H22/21	97.95%	124.17%	96.43%	107.35%	109.90%	118.11%	83.70%	100.56%	102.27%	104.50%	98.04%	89.71%	-	101.29%	102.62%
	H23/22	115.38%	88.59%	116.30%	78.08%	109.91%	83.33%	88.96%	91.62%	115.56%	87.07%	94.67%	105.10%	-	97.39%	96.62%
	H24/23	106.67%	111.36%	89.17%	117.54%	118.85%	103.20%	132.85%	107.93%	86.54%	97.03%	64.79%	75.15%	-	99.94%	102.64%
	H25/24	67.61%	85.71%	73.57%	88.81%	65.52%	117.05%	23.63%	11.86%	26.67%	26.53%	39.13%	25.00%	-	53.96%	56.27%
	H26/25	20.17%	19.05%	35.92%	34.45%	27.37%	17.88%	83.72%	166.67%	77.78%	153.85%	63.89%		-	-	38.97%
利用者数 (人/日)	H21	6.95	6.67	6.36	6.18	4.81	6.68	8.76	9.37	6.95	5.84	8.05	7.95	-	7.04	6.95
	H22	6.81	8.28	6.14	6.95	5.05	7.50	7.70	8.95	7.11	6.11	7.89	7.14	-	7.10	7.10
	H23	8.25	6.95	7.14	5.70	5.30	6.25	6.85	8.20	8.21	5.32	6.76	7.86	-	6.89	6.79
	H24	8.80	7.00	6.67	6.38	6.30	6.79	8.27	8.43	7.11	5.16	4.84	6.20	-	7.53	7.66
	H25	5.67	6.00	5.15	5.41	4.32	7.95	2.69	1.50	2.12	2.00	2.00	2.07	-	4.16	4.31
	H26	1.85	1.85	2.18	2.28	2.00	1.93	2.00	2.50	2.00	2.86	1.77		-	-	2.12



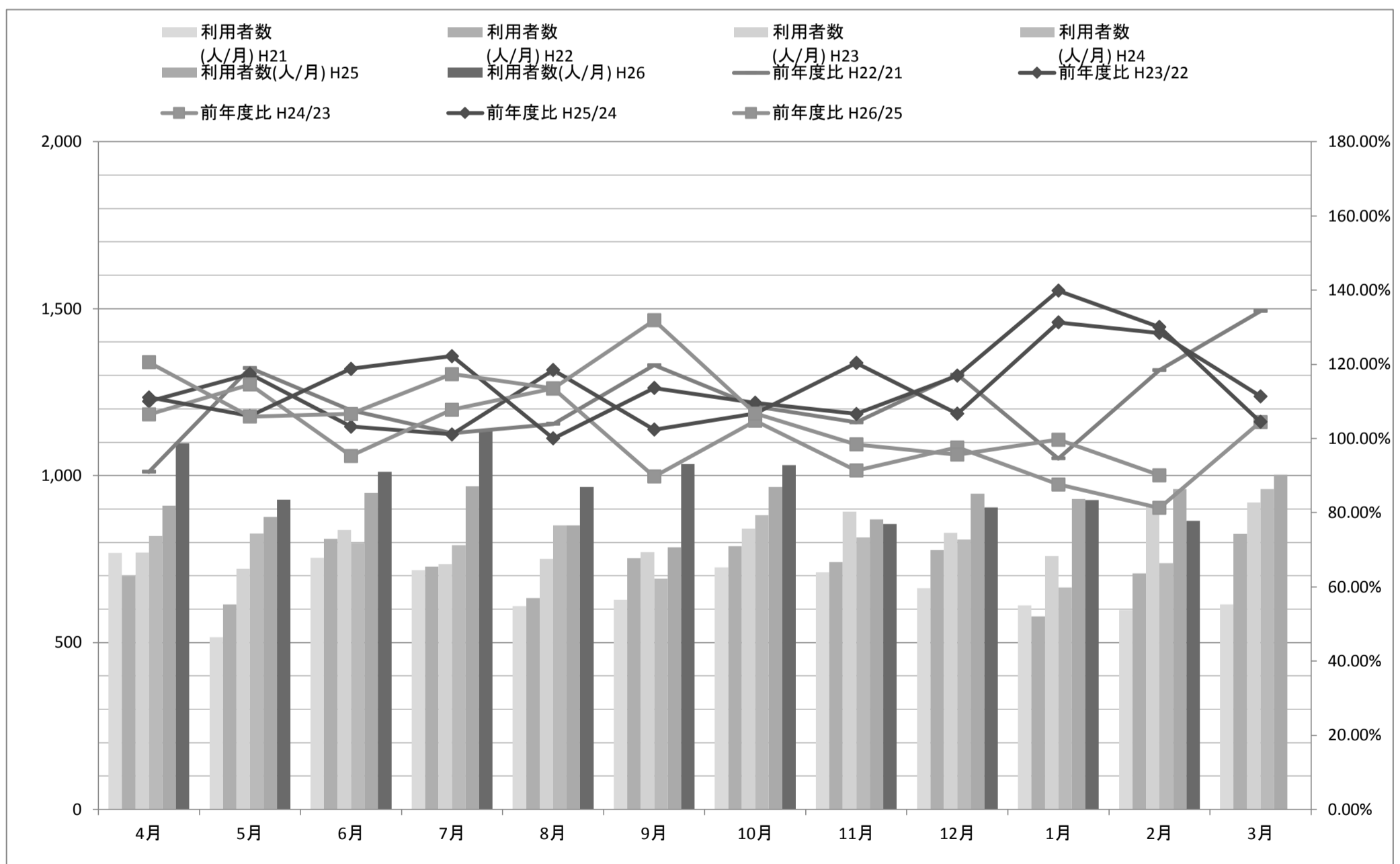
通学線

通学線		4月	5月	6月	7月	8月	9月	10月	11月	12月	1月	2月	3月	平均	合計	4-2月比
利用者数 (人/月)	H21	144	158	183	110	-	165	167	144	136	143	169	124	149.36	1,643	1,519
	H22	153	153	198	125	-	199	185	178	147	127	159	130	159.45	1,754	1,624
	H23	125	149	161	101	-	147	150	151	118	115	152	121	135.45	1,490	1,369
	H24	112	181	161	124	-	152	157	175	123	119	144	109	141.55	1,557	1,448
	H25	136	205	199	144	-	208	267	235	167	196	206	161	193.09	2,124	1,963
	H26	178	234	220	151	-	219	215	188	170	166	181		192.20	1,922	1,922
前年度比	H22/21	106.25%	96.84%	108.20%	113.64%	-	120.61%	110.78%	123.61%	108.09%	88.81%	94.08%	104.84%	-	106.76%	106.91%
	H23/22	81.70%	97.39%	81.31%	80.80%	-	73.87%	81.08%	84.83%	80.27%	90.55%	95.60%	93.08%	-	84.95%	84.30%
	H24/23	89.60%	121.48%	100.00%	122.77%	-	103.40%	104.67%	115.89%	104.24%	103.48%	94.74%	90.08%	-	104.50%	105.77%
	H25/24	121.43%	113.26%	123.60%	116.13%	-	136.84%	170.06%	134.29%	135.77%	164.71%	143.06%	147.71%	-	136.42%	135.57%
	H26/25	130.88%	114.15%	110.55%	104.86%	-	105.29%	80.52%	80.00%	101.80%	84.69%	87.86%		-	-	97.91%
利用者数 (人/日)	H21	6.86	8.78	8.32	5.00	-	8.68	7.95	7.58	7.56	9.53	8.89	7.29	-	7.79	7.83
	H22	8.50	8.50	9.00	9.62	-	9.95	9.25	8.90	8.65	8.47	8.37	7.65	-	8.81	8.92
	H23	7.35	7.84	7.32	7.77	-	7.35	7.50	7.55	7.38	7.19	7.24	7.56	-	7.45	7.44
	H24	7.00	8.62	7.67	8.86	-	7.95	7.14	8.33	8.20	7.00	7.58	7.27	-	7.76	7.79
	H25	8.50	9.76	9.95	10.29	-	10.95	12.14	11.75	10.44	11.53	10.84	10.73	-	10.67	10.67
	H26	8.48	11.70	10.48	10.79	-	10.95	9.77	10.44	10.00	10.38	9.53		-	-	10.22



山城線

山城線		4月	5月	6月	7月	8月	9月	10月	11月	12月	1月	2月	3月	平均	合計	4-2月比
利用者数 (人/月)	H21	768	516	754	717	609	628	725	710	663	611	597	614	659	7,912	7,298
	H22	699	614	811	727	633	752	788	741	777	578	707	825	721	8,652	7,827
	H23	769	721	837	735	750	770	841	892	829	759	908	919	811	9,730	8,811
	H24	819	826	798	792	851	691	881	815	809	665	738	960	804	9,645	8,685
	H25	910	876	948	968	851	785	966	869	946	930	960	1,003	918	11,012	10,009
	H26	1,097	928	1,011	1,136	966	1,035	1,031	855	905	927	865		978	10,756	10,756
前年度比	H22/21	91.02%	118.99%	107.56%	101.39%	103.94%	119.75%	108.69%	104.37%	117.19%	94.60%	118.43%	134.36%	-	109.35%	107.25%
	H23/22	110.01%	117.43%	103.21%	101.10%	118.48%	102.39%	106.73%	120.38%	106.69%	131.31%	128.43%	111.39%	-	112.46%	112.57%
	H24/23	106.50%	114.56%	95.34%	107.76%	113.47%	89.74%	104.76%	91.37%	97.59%	87.62%	81.28%	104.46%	-	99.13%	98.57%
	H25/24	111.11%	106.05%	118.80%	122.22%	100.00%	113.60%	109.65%	106.63%	116.93%	139.85%	130.08%	104.48%	-	114.17%	115.24%
	H26/25	120.55%	105.94%	106.65%	117.36%	113.51%	131.85%	106.73%	98.39%	95.67%	99.68%	90.10%		-	-	107.46%
利用者数 (人/日)	H21	36.57	28.67	34.27	32.59	29.00	33.05	34.52	37.37	34.89	32.16	31.42	27.91	-	32.69	33.17
	H22	33.29	34.11	36.86	34.62	28.77	37.60	39.40	37.05	40.89	30.42	37.21	37.50	-	35.60	35.42
	H23	38.45	37.95	38.05	36.75	32.61	38.50	42.05	44.60	43.63	39.95	43.24	43.76	-	39.88	39.51
	H24	40.95	39.33	38.00	37.71	37.00	36.37	40.05	38.81	42.58	35.00	38.84	48.00	-	39.37	38.60
	H25	43.33	41.71	47.40	44.00	38.68	41.32	43.91	43.45	49.79	48.95	50.53	50.15	-	45.13	44.68
	H26	52.24	46.40	48.14	51.64	46.00	51.75	46.86	47.50	47.63	48.79	45.53		-	-	48.45



神童子線

神童子線		4月	5月	6月	7月	8月	9月	10月	11月	12月	1月	2月	3月	平均	合計	4-1月比
利用者数 (人/月)	平成21年度	16	18	15	17	11	15	11	11	9	10	10	13	13.00	156	143
	平成22年度	9	12	11	5	6	10	16	8	14	6	8	9	9.50	114	105
	平成23年度	9	8	11	12	10	4	11	21	1	5	6	12	9.17	110	98
	平成24年度	7	11	16	7	6	5	10	15	17	2	7	5	9.00	108	103
	平成25年度	9	3	5	3	0	5	4	2	4	8	0	3	3.83	46	43
	平成26年度	0	3	1	2	3	1	3	7	4	1	0		2.27	25	25
前年度比	H22/21	56.25%	66.67%	73.33%	29.41%	54.55%	66.67%	145.45%	72.73%	155.56%	60.00%	80.00%	69.23%	-	73.08%	73.43%
	H23/22	100.00%	66.67%	100.00%	240.00%	166.67%	40.00%	68.75%	262.50%	7.14%	83.33%	75.00%	133.33%	-	96.49%	93.33%
	H24/23	77.78%	137.50%	145.45%	58.33%	60.00%	125.00%	90.91%	71.43%	1700.00%	40.00%	116.67%	41.67%	-	98.18%	105.10%
	H25/24	128.57%	27.27%	31.25%	42.86%	0.00%	100.00%	40.00%	13.33%	23.53%	400.00%	0.00%	60.00%	-	42.59%	41.75%
	H26/25	0.00%	100.00%	20.00%	66.67%	-	20.00%	75.00%	350.00%	100.00%	12.50%	0.00%		-	-	58.14%
利用者数 (人/日)	平成21年度	0.76	1.00	0.68	0.77	0.52	0.79	0.52	0.58	0.47	0.53	0.53	0.59	-	0.64	0.65
	平成22年度	0.43	0.67	0.50	0.24	0.27	0.50	0.80	0.40	0.74	0.32	0.42	0.41	-	0.74	0.48
	平成23年度	0.45	0.42	0.50	0.60	0.43	0.20	0.55	1.05	0.05	0.26	0.29	0.57	-	0.45	0.44
	平成24年度	0.35	0.52	0.76	0.33	0.26	0.26	0.45	0.71	0.89	0.11	0.37	0.25	-	1.01	0.46
	平成25年度	0.43	0.14	0.25	0.14	0.00	0.26	0.18	0.10	0.21	0.42	0.00	0.15	-	0.19	0.19
	平成26年度	0.00	0.14	0.05	0.09	0.14	0.05	0.14	0.39	2.00	1.00	0.00		-	-	0.15

